

Good Morning World

Kriztlé[®]
Good Morning World





CONTENTS



Introduction
Page: 04



Spa
Page: 08



Sauna
Page: 37



Shower Panels
Page: 60



Shower Enclosures
and Partitions
Page: 76



Technical Drawings
Page: 88





Good Morning World

Because all your good days begin with a good morning.

Because all your wonderful moments source its energy from a good morning.

Because every great thought can spot its origin in a good morning.

Because your idea of a good morning always has a good in it.

Because you are enchanted by world's most contemporary ideas and designs.

Because you have a global perspective and a vision beyond established thought processes.

Because the world is your playground.

Because you're always proud of yourself and your space.

Because every little thing around you impacts your being.

Because you deserve the best in the world and you strived to earn it.

Because each new day you're eager to rise up to say Good Morning World.





Innovative... Progressive... Stylish....

A Brand New thinking.

A New Brand Thinking.

Kriztle products make the most interesting spaces for people around the world. Be it in private homes, hotels, airports or public buildings, Kriztle elevates the mood of the spaces and the people enjoying them.

The Kriztle brand is innovative to source and blend ideas, materials and designs from different parts of the world. Created by internationally renowned designers, manufactured with utmost care and precision by skilled hands in countries famous for their craftsmanship, it blends unique materials to celebrate moments.

It's new range of infrared sauna is a good example of bringing latest technology in to the wellness management and of the progressive thinking of the brand.

The Kriztle brand is not a style statement. It is an expression of how you look at the world. And also how the world looks at you.

Good Morning World





Kriztle Aquapolis: Inspired By Nature

Air, Water & Heat are the key elements of life and the biggest treasure throughout the whole existence of life in the planet. These elements control physical and vital energy, emotional, mental and spiritual states of living beings. Blending the concept of multi-sensory wellness through air, water and heat, Kriztle Aquapolis range of wellness gives you a complete retreat to rekindle your energy, to ignite your senses, and to prepare you to face your daily challenges. Equipped with products that have air and water massage and steam or infrared sauna coupled with chromo therapy, Aquapolis takes you to a new therapeutic level providing many powerful benefits:

- Releases muscular tension and promote relaxation
- Improves blood circulation, accelerating your natural healing process
- Detox your body
- Relieve pressure in joints, with buoyancy reducing body weight considerably
- Produce 'feel good' endorphins – the body's natural painkillers

For some, the bathroom is an arena for creative pursuits whereas for others it is a place to unwind. Baths have a whole new story to narrate... A soak in the spa or a hot steam bath in sauna invokes visions of indulgence, slow retreat into a private space where day dreams and relaxation allows your mind to drift in directions you never imagined. Above all, the amazing response of your body to these droplets of water is simply incredible.

Kriztle Aquapolis unites you water, air and heat in a most pure and natural relationship. Experiencing the benefits of these elements through its sate of the art sauna and spa systems motivate the mind and create a sense of belonging and comfort in the bathroom. Inspired by the nature, the Kriztle collections transform bathrooms into exotic retreats. These sophisticated, private spaces are the modern day sanctuaries of relaxation and revival. Aided by legendary design, they speak the single language of harmony of space and matter.

SPA

History of bathing is entwined with the history of man.

But the purpose of bathing has gradually added a new dimension to the original ideology of cleanliness and hygiene. In the modern times, bathing has amassed new perspectives of life as a stress buster and as a technique for relaxation.

This is where the indoor and outdoor spa welcomes new ideas and creativity into its fold.

Kriztlé showcases the most refreshing ideas in indoor and outdoor spas from across the length and breadth of the globe.

Make it your most refreshing idea to welcome every morning.

Say, "Good Morning World".



AQUAPOLIS MASSAGE BATHTUBS



Looking for a luxurious bath? You have come to the right place. Kriztle showcases a range of luxury in the Aquapolis Massage Bath Tubs. They come in various sizes and shapes. Some are the classic rectangle model while others fit snugly into a corner of your bath/bedroom.

The Aquapolis range comes fitted with high power water jets and smaller massage jets. Other attractions include Chromo Therapy, Hot & cold mixer, bubble massage and Hand shower. Everything is computer controlled. Some come with a headrest too to give the ultimate luxury. Soak yourself in one to know the difference.

The combinations gives you pleasure while it cleanses completely and relaxes you in style. And what's more, each piece has Auto Cleaning System.

Page 10

AQUAPOLIS INDOOR SPA



An Indoor spa is a luxury of sorts and many dream of having one. But most don't get to really creating one as it takes much effort in redoing the interior. Now all that's history -presenting the Indoor spa collection from Kriztle.

The spa comes in various sizes and configurations. To start off, we have the single capacity one where it is just you relaxing. Then you can have one for couple which comes with headrest for luxurious togetherness. We have few for threesome too.

Enjoy a bubble bath or a surf bath with Chromotherapy. The spa comes in different finishes and matches rooms of any décor. Easy to fit and maintain, this collection is sure to take your breath off.

Page 28

AQUAPOLIS OUTDOOR SPA



If you are an outdoors person who loves luxury, here's the best thing that can happen to you. The outdoor spa collection from Kriztle. It combines the feel of Nature and luxury of modernity in a capsule called the outdoor spa.

Now enjoy your rejuvenating bath taking in a view of the great exteriors. Let the wind caress you while you drift off into a surreal relaxation listening to your favourite music on the FM radio. You could also watch a movie/video on the screen while the multiple jets massage the muscles.

The outdoor spa unit is easy to install. They can be operational in a matter of hours and is suitable for all kinds of surfaces like cobbled yards, grass or sand.

Page 33



◀ BT 1002

Kriztle Aquapolis BT 1002 is an aesthetically designed Bathtub to give you a power bath experience with 14 massage jets strategically installed in the Bathtub, stimulating and rejuvenating your body and mind simultaneously. The oval shaped, white Bathtub is enticing and matching any contemporary bathroom. You can rest your head on the headrest designed and placed at the perfect height, helping you to enjoy a longer bath at ease and comfort. The well-equipped control panel with the bathtub mixes hot and cold water, in a balanced ratio to have an ideal dip in the bathtub, whatever be the climate outside.

FUNCTIONAL FEATURES

Computer control system	Earth leakage protector
Water massage	Water inlet function selector
Chromo therapy	Headrest pillow
Hand shower	Insulation cover
Dry run prevention	Water force regulator
Auto cleaning	Hot & cold water mixer
Water inlet spout	
Water level sensor	
Integrated overflow & drainage system	

SPECIFICATIONS

Size	1700 x 850 x 580 mm
Water capacity (L)	138-246
Empty tub weight (kg)	68
Whirlpool pump (HP)	1.0 HP / 750 W
Number of massage jets	14
Total power requirement (W)	750
Control panel	CCP 1000
Skirting	3 Sides



◀ **BT 1005**

Kriztle Aquapolis BT 1005, the white coloured and fashionably designed Bathtub, gives a royal look, offering you a royal bath. The Bathtub provides you more depth to have a deeper soak in the Bathtub. It has a beautifully carved brim, an additional headrest is not required to rest your head. It has a long and flexible hand shower helping you to have a shower bath being soaked in the water, which doubles your amusement and enjoyment in the Bathtub, tempting to have long time bath forgetting heftiness of professional life.

FUNCTIONAL FEATURES

Computer Control system	Earth leakage protector
Water Massage	Integrated overflow & Drainage system
Chromo therapy	Water inlet spout
Hand Shower	Insulation cover
Dry run prevention	Water inlet function selector
Hot & cold water mixer	Water force regulator
Auto cleaning	
Water level sensor	

SPECIFICATIONS

Size	1750 x 850 x 760 mm
Water capacity (L)	128-208
Empty tub weight (Kg)	66
Whirlpool pump (HP)	1.2 HP / 900 W
Number of massage jets	9
Total power requirement (W)	900
Control panel	CCP 1000
Skirting	4 sides (Island model)



◀ BT 1007

This triangle shaped Bathtub is flawlessly fashioned to perfectly fit snugly into the corner of any bathroom, without occupying much space. The two headrests, gives you an absolute option to recline in the Bathtub and gaze at the beautifully decorated bathroom from any angle you prefer. The Bathtub provides you an elevated space, which is out of the reach of the water, where your cell phone and handy electronic gadgets can be placed and you feel the joy of everything being at your close reach.

FUNCTIONAL FEATURES

Computer Control System	Earth leakage protector
Water massage	Integrated overflow & Drainage system
Chromo therapy	Water inlet spout
Hand shower	Headrest pillow (2 nos)
Auto cleaning	Water inlet function selector
Hot & cold water mixer	Water force regulator
Dry run prevention	Insulation cover
Water level sensor	

SPECIFICATIONS

Size	1230 x 1230 x 620 mm
Water capacity (L)	115-187
Empty tub weight (Kg)	59
Whirlpool pump (HP)	1.0 HP / 750 W
Number of massage jets	14
Total power requirement (W)	750
Control panel	CCP 1000
Skirting	Front side (corner model)





◀ BT 1009

Pamper yourself in sheer luxury with BT 1009. Enjoy a long relaxing bath as 16 jets work hard to give you divine pleasure. Lean on the luxuriant pillow provided at the head of the tub while the water streams caress and comfort your body. Discover the new place of unwind and luxury in BT 1009.

FUNCTIONAL FEATURES

Computer Control System	Earth leakage protector
Water massage	Integrated overflow & Drainage system
Chromo therapy	Water inlet spout
Hand shower	Headrest pillow
Auto cleaning	Water inlet function selector
Hot & cold water mixer	Water force regulator
Dry run prevention	Insulation cover
Water level sensor	

SPECIFICATIONS

Size	1800 x 850 x 640 mm
Water capacity (L)	197-291
Empty tub weight (Kg)	59
Whirlpool pump (HP)	1.2 HP / 900 W
Number of massage jets	16
Total power requirement (W)	900
Control panel	CCP 1000
Skirting	Nil (Sunken Model)





◀ BT 1010

Requale yourself in sheer luxury with BT 1010. Enjoy a long relaxing bath as 16 jets work hard to give you divine pleasure. Lean on the luxuriant pillow provided at the head of the tub while the water streams caress and comfort your body. Discover the new place of unwind in luxury in BT 1010.

FUNCTIONAL FEATURES

Computer Control System	Earth leakage protector
Water massage	Integrated overflow & Drainage system
Chromo therapy	Water inlet spout
Hand shower	Headrest pillow
Auto cleaning	Water inlet function selector
Hot & cold water mixer	Water force regulator
Dry run prevention	Insulation cover
Water level sensor	

SPECIFICATIONS

Size	1800 x 850 x 640 mm
Water capacity (L)	197-291
Empty tub weight (Kg)	59
Whirlpool pump (HP)	1.2 HP / 900 W
Number of massage jets	16
Total power requirement (W)	900
Control panel	CCP 1000
Skirting	3 Sides





◀ BT 2006

Who doesn't love a massage after a hectic day. Bring home your own masseur with BT 2006. The tub has 6 water jets and 10 air jets that helps you relax your muscles and makes you feel lighter. With a pillow at the head of the tub, chances are that you may slip into a blissful sleep while in the bath. It is so relaxing.

FUNCTIONAL FEATURES

Water Proof Computer Control System with Remote Control	Auto lock
Water massage	Water inlet spout
Bubble massage	Headrest pillow
Chromo therapy	Water inlet function selector
Ozone Purification	Water level sensor
Insulation cover	Constant water temperature
Water force regulator	Dry run prevention
Auto cleaning	Integrated overflow and drainage system
Hand shower	Check Valve
Hot & cold water mixer	FM Radio
Earth leakage protector	Speaker
	Telephone/CD Connectivity

SPECIFICATIONS

Size	1750 x 820 x 640 mm
Water capacity (L)	160-286
Empty tub weight (Kg)	74
Number of Massage jet	6
Number of Air jets	10
Whirlpool pump (HP)	1.2 HP / 900 W
Ozone Generator (w)	6
Constant Temperature Heater (w)	1500
Air Pump (W)	300
Total power requirement (W)	2706
Control panel	CCP2000
Skirting	3 sides





◀ BT 2010

The triangle shaped Kriztle Aquapolis BT 2010 Bathtub is impeccably designed to absolutely fit into the corner of your bathroom, making your bathroom spacious enough for your free movement without being hindered by the Bathtub. The Bathtub has two headrest pillows on the parallel sides, giving you an absolute option to recline in the bathroom in whichever side you want to gaze at the marvelously adorned Bathtub from any angle you prefer. The 10 massage jets and 8 air jets systematically placed in the Bathtub give the perfect message for your body in the most gentle and soothing way possible. The elevated space within the Bathtub, where water does not reach, can be used to place your electronic gadgets while being in the Bathtub.

FUNCTIONAL FEATURES

Water Proof Computer Control System with remote control	Water inlet spout
Water massage	Headrest pillow-2Nos
Bubble massage	Inbuilt seat
Chromo therapy	Water inlet function selector
Ozone Purification	Water level sensor
Insulation cover	Constant water temperature
Water force regulator	Dry Run Prevention
Auto cleaning	Integrated overflow & drainage system
Hand shower	Check Valve
Hot & cold water mixer	FM Radio
Earth leakage protector	Telephone/CD Connectivity
Auto lock	

SPECIFICATIONS

Size	1390 x 1390 x 650 mm
Water capacity (L)	168-290
Empty tub weight (Kg)	79
No of Air jets	8
Number of massage jets:	10
Whirlpool pump (HP)	1.2 HP /900 W
Ozone Generator (w)	6
Constant Temperature Heater (w)	1500
Air Pump (W)	300
Total power requirement (W)	2706
Control panel	CCP2000
Skirting	Front sides (corner model)





◀ BT 2011

Fits snugly into a corner of your bathroom or even the bedroom. This small compact jacuzzi is pure unbridled fun. Relax your tired muscles as six jets massage and pamper you. The Kriztle BT2011 is a pleasure packed punch.

FUNCTIONAL FEATURES

Water Proof Computer Control System with remote control	Auto lock
Water massage	Water inlet function selector
Bubble massage	Water level sensor
Chromo therapy	Constant water temperature
Ozone Purification	Dry run prevention
Insulation cover	Integrated overflow and drainage system
Water force regulator	Check Valve
Auto cleaning	FM Radio
Hand shower	Speaker
Hot & cold water mixer	Telephone/CD Connectivity
Earth leakage protector	

SPECIFICATIONS

Size	1500 x 1500 x 640 mm
Water capacity (L)	206- 268
Empty tub weight (Kg)	79
Number of Air jets	8
Number of Massage Jets	6
Whirlpool pump (HP)	1.2 HP /900 W
Ozone Generator (w)	6
Constant Temperature Heater (w)	1500
Air Pump (W)	300
Total power requirement (W)	2706
Control panel	CCP2000
Skirting	Front sides (corner model)





◀ BT 2012

Inspired by the traditional love seat, this luxuriant tub is for couples. Enjoy your time together in a refreshing soak. What's you can get creative watching something on the computer attached to the tub. Celebrate each moment.

FUNCTIONAL FEATURES

Water Proof Touch Computer Control Panel with Remote Control	Water Inlet Function Selector
Water Massage	Auto Lock
Bubble Massage	Headrest Pillow
Chromo Therapy	Water Level Sensor
Ozone Purification	Constant Water Temperature
Insulation Cover	Check Valve
Water Force Regulator	Speaker
Auto Cleaning	FM Radio
Hand Shower	Telephone/CD Connectivity
Hot & Cold Water Mixer	Dry Run Prevention
Earth Leakage Protection	Integrated Overflow & Drainage System

SPECIFICATIONS

Size	1900 x 1300 x 660 mm
No. of Users	2
Computer Control Panel	AA-07 HF
Whirlpool Pump	1.2 HP
Constant Temperature Heater	1500 W
Ozone Generator	6 W
Air Pump	300W
Total Power Requirement	2706
Water Capacity(L)	750- 950
Empty Tub Weight(Kg)	110
Head Rest Pillows	2
Air Massage	12 Nos
Water massage	8
Skirting	3 Side





◀ BT 2012 A

Just perfect to have a balanced life. You can be officially alert while getting romantic. A computer, phone and CD are just few gadgets that help you spend a nice warm bath with your loved one. Check out the way to pure bliss.

FUNCTIONAL FEATURES

Water Proof Touch Computer Control Panel with Remote Control	Auto Lock
Water Massage	Water Inlet Spout
Bubble Massage	Headrest pillow
Chromo Therapy	Water Inlet Function Selector
Ozone Purification	Water Level Sensor
Insulation Cover	Constant Water Temperature
Water Force Regulator	Check Valve
Auto Cleaning	FM Radio
Hand Shower	Telephone/CD Connectivity
Hot & Cold Water Mixer	Dry Run Prevention
Earth Leakage Protection	Integrated Overflow & Drainage System

SPECIFICATIONS

Size	1900 x 1300 x 660 mm
No. of Users	2
Computer Control Panel	AA-07 HF
Water Massage Jets	8 Nos.
Air Massage Jets	12 Nos.
Whirlpool Pump	1.2 HP
Constant Temperature Heater	1500 W
Ozone Generator	6 W
Air Pump	300W
Total Power Requirement	2706
Water Capacity (L)	750- 950
Empty Tub Weight(Kg)	110
Head Rest Pillows	2
Skirting Nil	(Sunken Model)





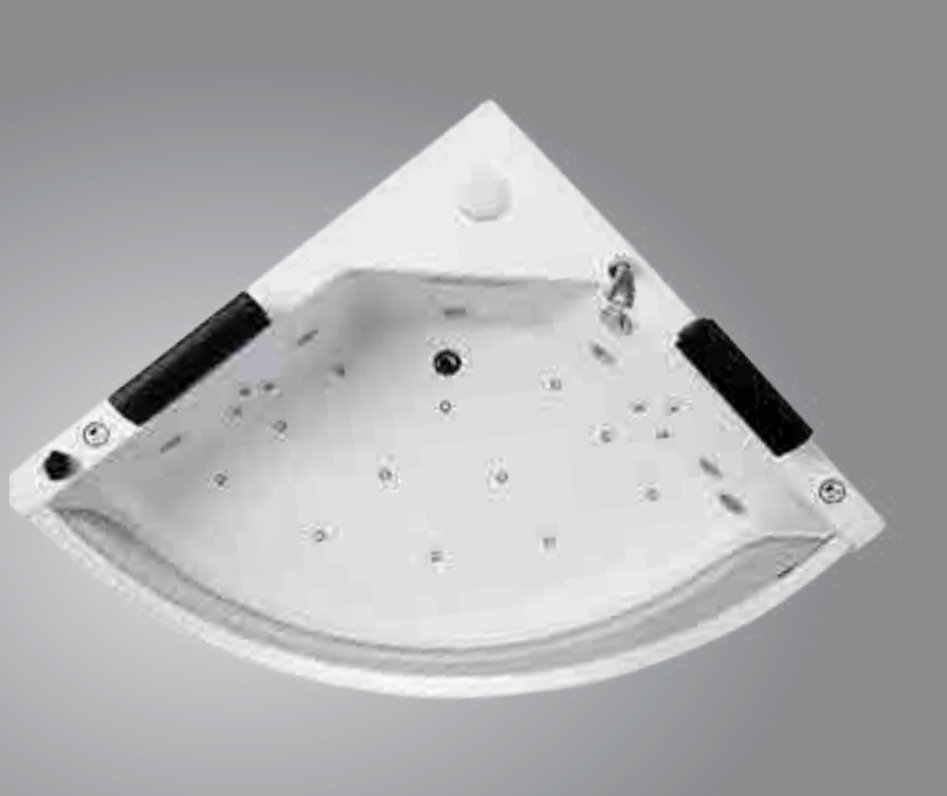
BT 3001

Get cosy in the snug Aquapolis Bathtub BT2013. Rest your head on the cushy headrest while the massage and power body jets help you unwind. Perfect for small bathrooms. Relax and get romantic.



FUNCTIONAL FEATURES

Computer Control System	Constant Water Temperature
Water Massage	Waterfall Intake
Bubble Massage	Check Valve
Nano Massage	Timer
Chromo Therapy	Water Level Sensor
Ozone Purification	Insulation Cover
Bluetooth Connectivity	Dry Run Prevention
Integrated Overflow & Drainage System	Earth Leakage Protection
Digitalized Thermostatic Mixer	Hand Shower
Headrest Pillow (2Nos)	Auto Lock
Speaker	Water Inlet Function Selector



SPECIFICATIONS

Size	1400 x 1400 x 600 mm
Control Panel	AA- 12AA -15AA -16
Water Capacity (L)	223
Empty Tub Weight	80
Whirlpool Pump	1.2hp/900w
Air Pump	300W
Constant Temperature Heater	3kW
Ozone Generator	6W
Total Power Requirement	4206
No. of Massage Jets	4
No. of Body Jets	6
Nano Air Jets	12
Skirting	Corner Model





BT 3002

Take your cosy bath to next level with BT 2014. Made for two, it has comfortable headrests. It comes packed with 8 Nano jets and 8 massage jets. The transparent side panel speaks volumes of what is possible in this trendy new tub.



FUNCTIONAL FEATURES

Computer Control System	Waterfall Intake
Water Massage	Timer
Bubble Massage	Water Level Sensor
Nano Massage	Insulation Cover
Chromo Therapy	Dry Run Prevention
Ozone Purification	Earth Leakage Protection
Digitalized Thermostatic Mixer	Hand Shower
Headrest Pillow (2 Nos)	Skirting
Bluetooth Connectivity	Speaker
Integrated Overflow & Drainage System	Water Inlet Function Selector
Constant Water Temperature	Auto Cleaning System

SPECIFICATIONS

Size	1700 x 800 x 600 mm
Control Panel	AA - 12AA -15AA -16
Water Capacity (L)	205
Empty Tub Weight	78 Kg
Whirlpool Pump	1.2hp
Air Pump	300W
Constant Temperature Heater	3kW
Ozone Generator	6W
Total Power Requirement	4206
Nano Air Jets	8
No. of Massage Jets	9



BUILD QUALITY BATH TUB

QUALITY AND DURABILITY

Over a decade, Kriztle has established itself as a market leader brand in the bath ware segment with its ISO certified manufacturing plants and high quality of materials used. The superior material quality and workmanship of the brand ensures long-term benefits. The premium-grade acrylic with fibre reinforcement used in the Kriztle products resists deformation, staining, scratches etc and will retain the original gloss for a long time. The high performance and fully-linked coating is specially formulated for the bathtub surface, which also provide the unsurpassed richness.

The innovative technologies incorporated in the production of each product portray the refinement in quality and guaranteed performance of the products. The digital controls, switches and other electronic accessories also adhere by the rule of the best. All the electrical equipments used in Aquapolis Bath ware are CE certified. Faucets, Jets, Hand Shower, etc. are made with solid brass bodies or anti-corrosive stainless steel.

The Bath Tubs from Kriztle mesmerize you with their the fine quality and features. It is so inviting that you just want to slip off your clothes and slip into it for a quiet dip. The Bath tubs have feature like head rests, massage jets, USB connectivity for music and more.

FUNCTIONALITIES

Whether it is a wow factor of the spa or featured functions of other products, Kriztle maintains the sensations factor all through. We have left no stones unturned. The innovative blend of user ergonomics and technology marks a new trend of products, involving you to save effort, energy and water in the most intelligent manner possible.

Kriztle wellness products are a preface to the world of wellness and hygiene. The elegant and minimalist design of the wellness collection creates an image of form and function in equal balance. The advanced features, effortless form and trouble-free operations of Kriztle wellness products - Whirlpool, Air Pumps, Waterspouts, Water Mixers, Bubble jets etc enable your bath to be more beneficial. The efficiency of each of these products transforms your everyday routine into an easy wellness experience. The effortless functioning of the knobs and the meticulous performance of mixers, water level sensors, auto cleaning system, overflow, and drainage system are some of the futuristic advantages transforming your mundane every days to a breathtaking wellness event. Style accessories like LED lights, FM radio, etc provides the utilitarian touch of modern styling to any bathroom.

Kriztle have pioneered in the versatility of functionality in each of our products with a distinctive style of our own.... To exalt the grooming experience.

DESIGN AND STYLE

The creation and design of Aquapolis by Kriztle are innovate, elegant, yet simple. Minimalist yet not monotonous, individualist yet not uncharacteristic. Aquapolis is for those classy individuals with a zeal for the chic and trendy. The many intelligent and aesthetic combinations of Glass, Metal, Fibre and Ceramic offer the possibility of creating a new level of aesthetic perfection.

The aesthetic creations of aquapolis set an ambience for purist bathing. Timeless designs bring the art of well being directly to the bathroom. Particularly striking curvature and geometric patterns convey harmony and space and lend the bathroom the special and uniqueness. Vivid colours, diverse textures and finishes characterize the freshness of the bathroom range. The desire to feel good stylishly is distinctly present in every nook and corner of your wellness sanctum.

From the faucets to the luxury spas, Kriztle speaks a design language of its own - the language of art, space and technology merged into one.

The designs have been basically aligned into:

Contemporary designs – up-to-date designs completely utilitarian, to complement every bathroom.

Traditional designs – those classy designs, which bring in an elite look to your place of refuge.

Transitional designs – they are the mostly chosen designs, which is a perfect combination of the elegant conventional designs and chic modern designs.

Minimalistic designs – “Simplicity is the ultimate sophistication” – Leonardo Da Vinci.

The minimal embellishments, rhythms and patterns eliminating all nonessential elements and forms bring in the maximum effect to the enticing environment of your snug bathroom.

Whatever be your style statement, Kriztle has a testimony to all...

GUARANTEE AND SERVICE

Kriztle products have a reputation for unmatched quality and reliability. The whole Aquapolis Bath ware ranges come with an outstanding guarantee. Our products are manufactured and tested under the highest quality standards. Our terms of warranty vary with products, which are given in details in the warranty card along with each product.

Any queries regarding installation, maintenance or other technical information can be acquired by contacting our service department or by calling our toll free number, which is provided at the back of this catalogue.

Use the ‘Toll free number in the guarantee card’ or login to www.kriztle.com/support - for further assistance and guidance.

PARTS DESCRIPTION

BT 1000 SERIES

BOTTOM WATER MASSAGE JET

Material : Brass
Finish : Chrome plated



ON-OFF SWITCH

On/off switch for the water massage jets



MAIN CONTROL BOARD

Is the power source & controlling unit of all the electronic and electric parts in the massage tub.



BT 2000 SERIES

CONTROL DISPLAY

FEATURES:

1. Feather touch sensing display control screen
2. LED backlit screen
3. Water proof
4. Switching the massage jets on/off
5. FM / CD on/off
6. Volume / tuning + and -
7. Setting temperature for constant temperature heater
8. Ozonator on/off
9. Spout on/off



BUBBLE MASSAGE JET

Material : Brass
Finish : Chrome Plated



AIR PUMP

Used for delivering air to the bubble massage jets
Rated power: 300 watts



CONSTANT TEMPERATURE HEATER

Maintains the temperature filled in the tub when using the water massage jet.
Power : 1.5 KW



MAIN CONTROL BOARD

Is the power source & controlling unit of all the electronic and electric parts in the massage tub.



SPEAKER

Power : 15 watt



REMOTE

Completely waterproof and can control all the electronic and electric functions of the massage tub with reaching for the control display.



OZONATOR

Function : Reduces need for high chemical doses helps destroy bacteria, viruses, algae, yeasts oxidizes other contaminants reduces odour and chloramines prolongs equipment life reduces maintenance time & cost ozone is environment friendly.



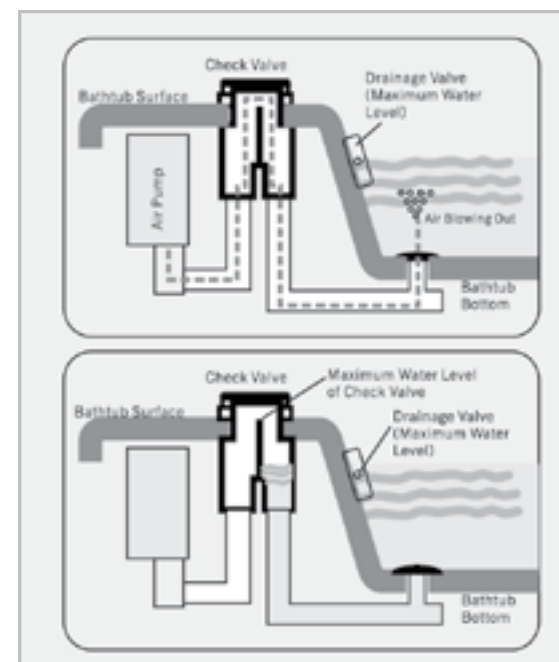
Power : 8 watt

AUTO LOCK

The control system can be locked and unlocked through the control panel or remote control. The system will move to locked mode automatically if it is not touched for 5 minutes.

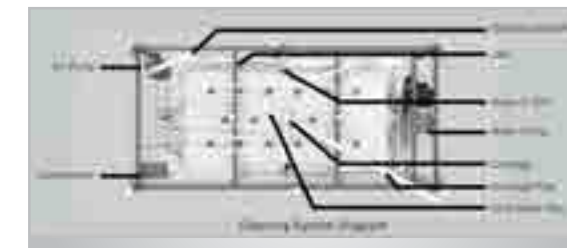
CHECK VALVE

Check valve is provided and placed between air pump and air jets. It prevents flow of water into the air pump through the air pipe connected to the air jets when the pump is shut off.



ADVANCED SELF CLEANING SYSTEM

Automatic cleaning system effectively drains out water in the jets and pipes, once the system is switched off. 5 Minutes after the system is switched off, the system performs auto cleaning and completes in 2 minutes.



FM RADIO AND TELEPHONE CONNECTIVITY

These useful add ons provide the extra convenience and utility to your Kriztle massage bath tubs.

COMMON FEATURES

BIG WATER MASSAGE JET

Material	:	PVC body with abs covering
Finish	:	Chrome plated
Features	:	1. Multi-directional 2. Can reduce or increase the water pressure coming through individual jet



WHIRLPOOL PUMP

Power	:	1 H.P or 1.2 H.P (Differs per model)
Input	:	220-240v



WATER PRESSURE REGULATOR

Function	:	Regulates the water pressure coming from the big water massage jets.
Material	:	PVC body with abs knob.



DRAINAGE HOSE

Material	:	Flexible pvc
Length	:	As per the model



UNDERWATER LED LIGHT

Multi-color LED light for chromotherapy, completely waterproof.



HAND SHOWER

Material	:	Moulded PVC with ABS covering
Finish	:	Chrome plated handle and grey color shower head
No. of modes	:	3



WATER INLET SPOUT

Material	:	Brass
Finish	:	Chrome plated
Type of flow	:	Foam flow waterfall



MIXER & DIVERTOR

Material of housing	:	Brass
Material of mixer	:	Ceramic disc plate encased in lastic housing
Material of divertor	:	Ceramic disc plate encased in plastic housing
Stages for divertor	:	1. Hand shower 2. Spout 3. Big massage jet



ELECTRICAL STANDARD 220V/150 HZ

All electrical components are CE certified.

WATERPROOF HEAD REST

Material: PU foam with moulded cover



ADJUSTABLE LEGS

Material: Screw made from galvanised iron with rubber bushing moulded.



FILTER ELBOW

Material	:	Brass chrome plated with built-in steel net.
Function	:	Being a sophisticated equipment, all massage tubs are provided with an easy to clean filter elbow, which like the name suggests filters the water from any large debris, entering the unit thereby damaging the pump.



SOLID BODY STRUCTURE

The support stands are made a stainless steel which will prevent corrosion and rusting for a long time. Most of the tub designs are with 3 side panels which give flexibility in installation.

ACRYLIC SHEET

Chemical name is pmma (Poly methyl methacrylate). We are using dupont brand acrylic sheets for its quality, color and finish. Once the acrylic sheet is moulded in the desired shape by a process known as "Thermoforming", 3 layers of fibre reinforcement is applied to give sturdiness to the sheet, and also to strengthen the sheet when a person is seated in the tub.

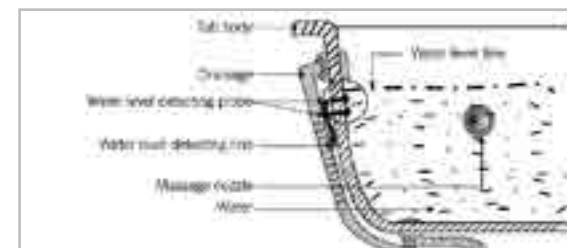
Color : White

Thickness of acrylic sheet : 2 mm

Thickness of fibre reinforcement : 3 mm

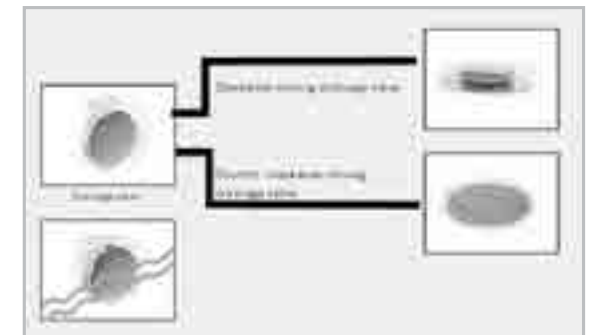
WATER LEVEL SENSOR

Water level sensor is present on all models except for BT-1001, 101 and 102. There are 2 sensors fixed on the inside of the tub. The sensor operates as a safety mechanism to prevent dry run of the motor, which means that the motor will not operate if water is not present till a particular level.



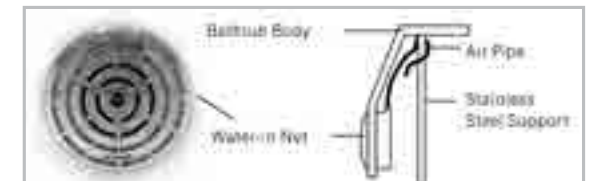
INTEGRATED DRAINAGE

The integrated overflow and drainage systems ensure the prevention of tub overflow and effective and easy draining of water off the pump.



DUST FILTERING

The mouth of the water-in-net acts as a filter and prevents hair, towel fibres or particles entering the water cycle system. If blockage occurs and affects the flow of water into the pump, the air pipe will suck air and the water pump will stop working automatically. When the blockage is remove, pump will re-start automatically.



Some of the features mention above are not available in all tub models. Please refer the list of specifications given with each model to individual specifications.

COMPARISON TABLE

PRODUCT CODE	BT1002	BT1005	BT1007	BT 1009	BT1010	BT2006	BT 2010	BT2011	BT 2012	BT 2012A	BT 3001	BT 3002	
DIMENSIONS(mm)	1700 x 850 x 580	1750 x 850 x 760	1230 x 1230 x 620	1800 x 850 x 640	1800 x 850 x 640	1750 x 820 x 640	1390 x 1390 x 650	1500 x 1500 x 640	1900 x 1300 x 660	1900 x 1300 x 660	1400 x 1400 x 600	1700 x 800 x 600	
WATER CAPACITY	138-246	128-208	115-187	197-291	197-291	160-286	168-290	206-268	750-950	750-950	223	205	
EMPTY TUB WEIGHT (Kg)	68	66	59	59	59	74	79	79	110	110	80	78	
TOTAL POWER REQUIREMENT	750W	900W	750W	900W	900W	2706W	2706W	2706W	2600w	2600W			
CONTROL PANEL	CCP1000	CCP1000	CCP1000	CCP1000	CCP1000	CCP2000	CCP2000	CCP2000	AA 07 HF	AA07HF	AA-12AA -15AA-16	AA-12AA -15AA-16	
WHIRPOOL PUMP(HP)	1.0 HP/750W	1.2 HP/900W	1.0 HP/750W	1.2 HP/900W	1.2 HP/900W	1.2HP/900W	1.2HP/900W	1.2HP/900W	1.2HP/700W	1.2HP/900W	1.2HP	1.2HP	
WATER MASSAGE	YES	YES	YES	YES	YES	YES	YES	YES	YES	YES	YES	YES	
MASSAGE JETS	14	9	14	16	16	6	10	6	8	8	4	9	
AIR PUMP(W)	NO	NO	NO	NO	NO	300W	300W	300W	300W	300W	300W	300W	
AIR JET(BUBBLE JET)	NO	NO	NO	NO	NO	10	8	8	12	12	6	6	
NANO AIR JET	NO	NO	NO	NO	NO	NO	NO	NO	NO	NO	12	8	
HOT & COLD WATER MIXER	YES	YES	YES	YES	YES	YES	YES	YES	YES	YES	YES	YES	
WATER INLET FUNCTION SELECTOR	YES	YES	YES	YES	YES	YES	YES	YES	YES	YES	YES	YES	
WATER FORCE REGULATOR	YES	YES	YES	YES	YES	YES	YES	YES	YES	YES	YES	YES	
CONSTANT TEMPERATURE HEATER	NO	NO	NO	NO	NO	1500W	1500W	1500W	1500W	1500W	3KW	3KW	
DRY RUN PREVENTION	YES	YES	YES	YES	YES	YES	YES	YES	YES	YES			
AUTO CLEANING SYSTEM	YES	YES	YES	YES	YES	YES	YES	YES	YES	YES	YES	YES	
OZONE GENERATOR (w)	NO	NO	NO	NO	NO	6W	6W	6W	6W	6W	6W	6W	
HEADREST PILLOW	YES	NO	YES	YES	YES	YES	YES	NO	YES	YES	YES	YES	
INSULATION COVER	YES	YES	YES	YES	YES	YES	YES	YES	YES	YES	YES	YES	
AUTO LOCK	NO	NO	NO	NO	NO	YES	YES	YES	YES	YES	YES	YES	
UNDERWATER LED LIGHT	YES	YES	YES	YES	YES	YES	YES	YES	YES	YES	YES	YES	
SKIRTING	3 SIDES	4 SIDES	FRONT SIDE	SUNKEN	3 SIDES	3 SIDES	FRONT SIDE	FRONT SIDE	3SIDE	SUNKEN	FRONT SIDE	3 SIDES	
WATER INLET SPOUT	YES	YES	YES	YES	YES	YES	YES	YES	YES	YES	YES	YES	
HAND SHOWER	YES	YES	YES	YES	YES	YES	YES	YES	YES	YES	YES	YES	
INTEGREATED OVERFLOW & DRAINAGE SYSTEM	YES	YES	YES	YES	YES	YES	YES	YES	YES	YES	YES	YES	
WATER LEVEL SENSOR	YES	YES	YES	YES	YES	YES	YES	YES	YES	YES	YES	YES	
CHECK VALVE	NO	NO	NO	NO	NO	YES	YES	YES	YES	YES	YES	YES	



◀ **ISP 1001**

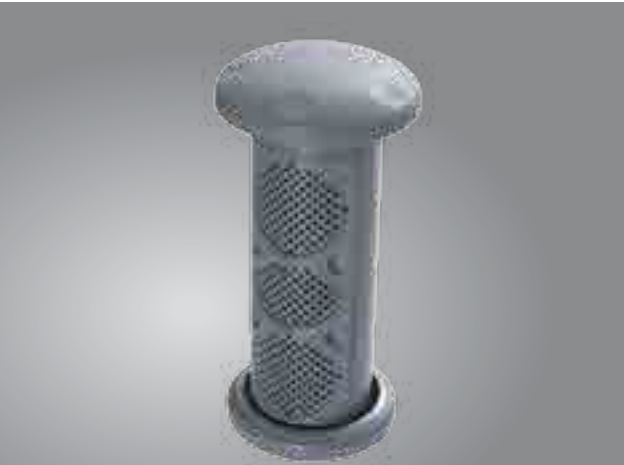
Discover love in the bath. The novel Indoor Spa series from Kriztle offers romance and relaxation combined. ISP 1001 is made for two to snuggle as the jet streams relax and play around you. It is fun and technically advanced with computerised controls.

FUNCTIONAL FEATURES

Computer Control System	Radio and Telephone Connectivity
Chromo Therapy	Speaker-2nos
Surf Bath	Volume +/-
Bubble Bath	Waterfall Intake
Ozone Purification	15"TV (Optional)
Built in Massage Bath Tub for Two Persons Use	Hand Shower
Earth Leakage Protection	Dry Run Prevention
Auto Lock	Auto Cleaning
Constant Water Temperature	Head Rest Pillow
Hot/Cold Mixer	Check Valve
Water Inlet Function Selector	Integrated Overflow & Drainage System
Water Force Regulator	
Water Level Sensor	

SPECIFICATIONS

Size	2000 x 1700 x 870
Water pump	2 hp/1500w
Constant Temperature Heater	3000w
Air Pump	400w
Ozone Generator	6w
Total Power Requirement	4906w
Computer Control System	CCP2000
Water Capacity	750 (L)
Empty Tub Weight	125Kg
No. of Water Massage Jet	11
No. of Air Massage Jet	9
Skirting	Sunken





◀ ISP 1005

With the built in massage tub for Three, ISP 1002 is the most enjoyable experience in bathing. The remote control and bubble bath are just few of the attractive features. Frolic in the bath like never before.

FUNCTIONAL FEATURES

Built-in Massage Bathtub for Three Persons Use	Earth Leakage Protection
Computer Control System	Water Inlet Function Selector
Chromo Therapy	Water Force Regulator
Surf Bath	Water Level Sensor
Bubble Bath	Headrest Pillow
Ozone Purification	Dry Run Prevention
Constant Water Temperature	Auto Cleaning
Radio / Telephone Connectivity	Hand Shower
Volume +/-	Integrated Overflow & Drainage System
Auto Waterfall intake	Check Valve
FM Radio	Speaker
Autolock	

SPECIFICATIONS

Size	1800 × 1800 × 860 mm
Water pump	1.2 hp/900w
Constant Temperature Heater	3000 w
Air Pump	400 w
Ozone Generator	6w
Total Power Requirement	4906w
Computer Control System	CCP2000
Water Capacity	750 (L)
No. of Water Massage Jet	12
No. of Air Massage Jet	6
Skirting	Sunken



◀ **ISP 1006**

ISP 1006 is pure pleasure. It comes all that you desire- a surf bath, a bubble bath, underwater light and of course, the massage. Made for two, it pampers you to no end.

FUNCTIONAL FEATURES

Computer Control System	Water Force Regulator
Surf Bath	Earth Leakage Protection
Bubble Bath	Bluetooth Connectivity
Chromo Therapy	Radio
Ozone Purification	Telephone Connectivity
Thermostatic Mixer	Speaker (2)
Constant Water Temperature	Auto Cleaning
Automatic Water Inlet	Integrated Overflow & Drainage System
Hot and Cold Water Mixer	Hand Shower
Dry Run Prevention	Timer
Water Inlet Function Selector	
Water Level Sensors	

SPECIFICATIONS

Size	2000 × 2000 × 700 mm
Water Capacity(L)	680
Empty Tub Weight	90 KG
No. Of Massage Jets	8
Nano Air Jets	14
Whirlpool Pump	1.2 hp/900
Air Pump	400w
Ozone Generator	6w
Constant Temperature Heater	3000 w
Total Power Requirement	4306w
Computer Control System	CCP2000
Skirting	Sunken



◀ ISP 1007

Made for two, the ISP 1007 gets better. Having fun in the tub becomes a reality with this design. What's more, it caresses and massages well at the same time with 10 Nano air jets.

FUNCTIONAL FEATURES

Computer Control System	Earth Leakage Protection
Surf Bath	Speaker
Bubble Bath	Check Valve
Chromo Therapy	Auto Cleaning
Ozone Purification	Radio
Thermostatic Mixer	Telephone Connectivity
Water Inlet Function Selector	Bluetooth Connectivity
Water Level Sensors	Dry Run Prevention
Water Force Regulator	Integrated Overflow & Drainage System
Constant Water Temperature	Hand Shower

SPECIFICATIONS

Size	2100 × 1200 × 700 mm
Water Capacity (L)	350
Empty Tub Weight	70.5 kg
Air Massage Jets	10 Nos
Water Massage Jets	4 Nos
Back Jet	6 Nos
Whirlpool Pump	1.2 hp/900w
Air Pump	300w
Ozone Generator	6w
Computer Control System	CCP2000
Constant Temperature Heater	3000w
Total Power Requirement	4206w
Skirting	Sunken



COMPARISON TABLE

PRODUCT CODE	ISP 1001	ISP 1005	ISP 1006	ISP 1007	
DIMENSIONS(mm)	2000 x 1700 x 870	1800 X 1800 X 820	2000 × 2000 × 700 mm	2100 × 1200 × 700 mm	
WATER CAPACITY (L)	750	750	680	350	
EMPTY TUB WEIGHT (Kg)	125	110	90 KG	70.5 kg	
CHROMOTHERAPY	YES	YES	YES	YES	
TOTAL POWER REQUIREMENT	4.9KW	4.3	4.3KW	4.2KW	
CONTROL PANEL	AA07 HF	AA07 HF	AA 12	AA 12	
WHIRPOOL PUMP(HP)	2 hp	1.2HP	1.2 hp	1.2 hp	
WATER MASSAGE	YES	YES	YES	YES	
MASSAGE JETS (SMALL)	6	12	NO	NO	
MASSAGE JETS (BIG)	5	6	8	10	
NANO AIR JET	NO	NO	14	10	
AIR PUMP(W)	400w	400w	400	400	
BUBBLE BATH	YES	YES	YES	YES	
AIR BUBBLE JET	9	9	NO	NO	
SURF BATH	YES	YES	YES	YES	
DRY RUN PREVENTION	YES	YES	YES	YES	
AUTO CLEANING SYSTEM	YES	YES	YES	YES	
OZONE GENERATOR	YES	YES	YES	YES	
HEADREST PILLOW	YES	YES	NO	NO	
RADIO	YES	YES	YES	YES	
TELEPHONE CONNECTIVITY	YES	YES	YES	YES	
TV	OPTIONAL	OPTIONAL	NO	NO	



◀ OSP 1003

Rev up your life with premium spa experience with OSP 1005. Enjoy plush luxury of swishings washing water in temperatures you desire. Tune into your favourite FM channel and play what you like most.

FUNCTIONAL FEATURES

Computer Control System	Multi System with USB & Card Reader
Surf Bath	Earth Leakage Protection
Bubble Bath	Constant Temperature
Chromo Therapy	Headrest Pillow
Water Cycle Function	Water Level Sensor
Water Inlet	Dry Run Prevention
Ozone Purification	Auto Cleaning
FM Radio	AutoLock
Volume +/-	Cushioned Top Cover
Speaker	Timer
Multi Direction Water Massage Jet Selector	

SPECIFICATIONS

Size	2200 × 2200 × 950 mm
Empty Tub Weight	410 Kg
Water Capacity (L)	1460
Weight with water	1880 Kg
Computer Control System	SS-02
Constant Temperature Heater	3.0 Kw
Water Pump	2 HP x 2 + 0.5 HP x 1
Total Power	5.8 Kw
Voltage	230 V/50 HZ
LED color light	Large diameter/super
Audio Devices	Lift/Stereo
Purifying devices	Yes
No .of Users	4
Number of Air Adjuster	3
No. of Big Jets	18
No. of Small Jets	31
No. of Watershed Regulator	2
No. of Water Filter	1
LCD TV	Optional
DVD Player	Yes
Insulation Cover	Yes
Steps	Optional
Skirting	4Side



◀ **OSP 1004**

Get ready for a mind blowing experience. Get the super cool OSP 1004 and rediscover the joy of bathing outdoors. Listen to great music or hymn a tune as you settle in for a relaxing massage by temperature controlled jet streams.

FUNCTIONAL FEATURES

Computer Control System	Multi System with USB & Card Reader
Surf Bath	Timer
Bubble Bath	Earth Leakage Protection
Chromo Therapy	Constant Temperature
Ozone Purification	Headrest Pillow
FM Radio	Water Level Sensor
Volume +/-	Dry Run Prevention
Speaker	Auto Cleaning
Water Cycling Function	Auto Lock
Water Inlet	Cushioned Top Cover
Multi Direction Water Massage Jet Selector	

SPECIFICATIONS

Size	2000 × 1700 × 950 mm
Empty Tub Weight	310 Kg
Water Capacity (L)	745
Weight with water	1270 Kg
Computer Control System	SS-02 +AA-16
Constant Temperature Heater	3.0 Kw
Water Pump	3 HP x 1 + 0.5 HP x 1
Total Power	5.0 Kw
Voltage	230 V/50 HZ
LED color light	Large diameter/super
Audio Devices	Lift/Stereo
Purifying Devices	Yes
No. of Users	3
No. of Air Adjuster	3
No. of Big Jets	9
No. of Small Jets	24
No. of Watershed Regulator	1
No. of Water Filter	1
LCD TV	No
DVD Player	Yes
Insulation Cover	Yes
Steps	Optional
Skirting	4 Side



◀ OSP 1006

A perfect exterior jacuzzi. Enjoy a good time as you enjoy the outdoors or just relax listening to some music. It comes with wooden steps to mount and get into the Tub. With remote control for temperature control, OSP 1006 is just like a dream come true.

FUNCTIONAL FEATURES

Computer Control System	Multi System with USB & Card Reader
Surf Bath	USB Connectivity
Bubble Bath	Timer
Chromo Therapy	Earth Leakage Protection
Water Inlet Function	Constant Temperature
Ozone Purification	Headrest Pillow
FM Radio	Water Level Sensor
Volume	Dry Run Prevention
Speaker	Auto Cleaning
Multi Direction Water Massage	Auto Lock
Jet Selector	Cushioned Top Cover

SPECIFICATIONS

Size	2350 × 2200 × 950 mm
Empty Tub Weight	458 Kg
Water Capacity (L)	1250
Weight with water	1708 Kg
Water Pump	2 HP x 2 + 0.5 HP x 1
Total Power	5.8 Kw
Voltage	230-240 V/50 HZ
Computer Control System	SS-03
Constant Temperature Heater	3.0 Kw
LED color light	Colourful
Audio Devices	Lift
Purifying devices	Yes
No. of Users	4
No. of Air Adjuster	3
No. of Big Jets	12
No. of Small Jets	42
No. of Watershed Regulator	2
No. Of Water Filter	Double filtered (optional)
LCD TV	Yes
USB Player	Yes
Insulation Cover	Yes
Steps	Optional
Skirting	4Side



COMPARISON TABLE

PRODUCT CODE	OSP 1003	OSP 1004	OSP 1006	
DIMENSIONS(mm)	2200 × 2200 × 950 mm	2000 × 1700 × 950 mm	2350 × 2200 × 950 mm	
WATER CAPACITY	1460	745	1250	
EMPTY TUB WEIGHT (Kg)	410Kg	310 Kg	458 Kg	
CHROMO THERAPY	YES	YES	YES	
TOTAL POWER REQUIREMENT	5.8 Kw	5.0 Kw	5.8 Kw	
CONTROL PANEL	SS-02	SS-01	SS-03	
WHIRLPOOL PUMP (HP)	2 HP x 2 + 0.5 HP x 1	3 HP x 1 + 0.5 HP x 1	2 HP x 2 + 0.5 HP x 1	
WATER MASSAGE	YES	YES	YES	
WATER MASSAGE JETS -Big	18	9	11	
WATER MASSAGE JETS -Small	31	24	42	
AIR PUMP(W)	NO	NO	NO	
MULTI DIRECTIONAL WATER MASSAGE JET SELECTOR	3	3	3	
WATER LEVEL SENSOR	YES	YES	YES	
DRY RUN PREVENTION	YES	YES	YES	
CONSTANT TEMPERATURE HEATER	3KW	3 KW	3 KW	
WATER CYCLING FUNCTION	YES	YES	YES	
OZONE GENERATOR (w)	YES	YES	YES	
FM RADIO	YES	YES	YES	
INSULATION COVER	YES	YES	YES	



SAUNA

Sauna is one of the healthiest ways to cleanliness. The health benefits of sauna bathing are manifold. It is a favoured way to destresses the body and mind. It is capable of making you feel lighter and more relaxed. It is definitely reinvigorating with a deep, healthy sweat that open the pores, enriches the metabolism and pushes tension away.

After a session at the spa, the muscles unwind naturally. Mentally, we emerge relaxed and revived. With body detoxed, we are ready for whatever the day may bring. Check out the whole new range of spa from Kriztle.

So, spare yourself few minutes daily to live life the healthier way. Even doctors are recommend sauna for its purifying benefits.



AQUAPOLIS MULTI SHOWER SYSTEM WITH STEAM SAUNA



Showers won't be the same anymore. Check out the wide range of Multi Shower System with Steam Sauna from Kriztle, the bath experts.

The Kriztle Multi Shower System has various attractive features like Steam Sauna, Water Massage, Air Bubble Massage, Foot Massage and Chromo Therapy. The systems are controlled by a computer for better results. With attractive lights, bathing becomes a favourite pastime.

The SS structure ensures that the product is durable and is ready to give many memorable showers. Some models come with Aromatherapy to for an enhanced experience. The shelves and seat inside the cubicle make everything very convenient.

AQUAPOLIS SHOWER CUBICLE WITH STEAM SAUNA



Get your own sauna with the Kriztle Shower Cubicle with Steam Sauna. These wonderful pieces are statements in luxury. The luxury comes with technical excellence.

The various technical details inside the Kriztle Shower Cubicle with Steam Sauna is computer controlled. It has various features to add beauty and provide healthy glow to your body. Unique features include Chromo therapy for lightening of skin, Water massage for muscle relaxation, Bubble massage for pure fun, Steam Sauna for detoxification, Ozone Purification for glowing skin.

And you do all this enjoying music on FM radio/CD compatibility or talking to your love on the telephone.

AQUAPOLIS SHOWER CUBICLE WITH DUAL SAUNA



This the best it can get in a sauna with shower. Kriztle gives the best of four worlds of extreme relaxation. The dual sauna shower cubicle has all four of it - A hand shower, a rain shower, the conventional steam sauna and the dry infrared sauna too.

This multifunctional shower cum sauna gives you the flexibility of options. With an absolute transparent cubicle, the unit adds to the beauty of your bath or bed room. It comes with a portable seat so that you can adjust your seating position inside the cabin while taking a sauna or remove it while taking a rain shower.

The unit has a ozone purification system to tone up the skin after each session. All the functions are operated with computer control system. The unit also has extra top lamp and fan to cool off in case of too much heat.

AQUAPOLIS INFRARED DRY SAUNA



Nowadays, several people opt for dry sauna. In dry sauna, there is not excessive heat or perspiration as in steam sauna. Dry Sauna has heat generated from a dry source. Kriztle presents Shower Cubicle with Infrared Dry Sauna where in the required heat is provided by Infrared rays.

The Infrared Dry Sauna is highly recommended for those with greasy skin. In a dry sauna, the pores get cleansed. Infrared Saunas have an extensive list of health benefits. From weight loss, pain relief, reducing stress and fatigue, strengthening your immune system and your cardiovascular system; the benefits for your body are endless.

The most important health benefit of Far Infrared is its efficiency in removing toxins from the body. This is achieved by a process called "resonate absorption"

◀ MS 5001

White body with blue tinted glass and spacious interior stands elegant and alluring to enjoy a majestic bath. It is a multi-system perfectly synthesized with bathtub as well as cubicle, offering a chain of the modest modern facilities such as Tub Bath, Shower Bath, Pressure Bath, Steam Bath, Aroma Bath, Massage Therapy, LED Chromo Therapy, and Air Bubble Massage. All these most modern facilities make the Bathtub cubicle a complete one. It is not all about enjoying a luxurious bath inside the cubicle but also serving therapeutic purposes offering enough of stimulation and rejuvenation for your body and soul. The air-bubble-massage facility in the cubicle is truly an energizer, which you will enjoy thoroughly.

FUNCTIONAL FEATURES

Computer control System with remote control	Foot Massager
Chromo therapy	Overhead SS shower
Ozone purification	Multi flow hand shower
Water massage	Aromatherapy
Bubble massage	Thermostatic Mixer & Diverter
Steam Sauna	SS Door Handle & Towel Bar
FM radio/CD compatibility	Integrated Overflow and Drainage System
Telephone connectivity	Speaker
Earth Leakage Protection	Shelf / Seat
Timer	Exhaust Fan
Auto lock	

SPECIFICATIONS

Size	1500 x 1500 x 2260 mm
Number of massage jets	6 Nos
Cubicle body panel	Glass panel & 6 mm safety glass with WREC coating
Steam generator	3000 W
Folding door	1 Nos

TUB SPECIFICATIONS

Massage tub cum shower tray	Anti skid acrylic with fiber reinforcement & SS structure
Tub colour	White
Water Massage Jets	6 Nos.
Headrest Pillow	2 Nos.
Air Massage Jets	8 Nos.
Air Pump	300 W
Whirlpool pump	1 HP/750W
Skirting	Front side (Corner model)





◀ MS 5003

Tickle yourself to happiness with the nouveau Multi shower systems from Kriztle. MS 5003 has many options to increase the fun of a shower. You can enjoy overhead, handheld or sprinklers as you wish.

FUNCTIONAL FEATURES

Computer control System with remote control	Timer
Water massage	Autolock
Steam sauna	Fm Radio and CD Compatibility
Chromo therapy	Head rest
Ozone Purification	Thermostatic Mixer & Diverter
Roof and overhead central - shower with Round CFL Lamp & Hand Shower	Integrated Overflow & Drainage System
SS Door Handle & Towel Bar	Exhaust Fan
Earth leakage protector	Speaker
Aromatherapy	Multi flow Hand shower
Telephone connectivity	Shelf
	Mirror

SPECIFICATIONS

Size	1700 x 900 x 2130 mm
Steam Sauna	3KW
Cubicle body	Acrylic, 6 mm safety glasses and powder coated Aluminium Profiles
Number of Sliding doors	2 Nos
Cubicle Body Jet	14 Nos

TUB SPECIFICATIONS

Massage bath tub	Acrylic with fiber reinforcement and S.S. Structure
Tub colour	White
Water Massage Jets	6 Nos.
Headrest Pillow	1 No.
Skirting	3 sides
Whirlpool pump	1.0 HP / 750V





◀ MS 5004

Designed for the corner, MS 5004 is luxury shower at its best. The trendy lighting inside the capsule adds to the glam of the shower system. Step inside for an out of the world experience.

FUNCTIONAL FEATURES

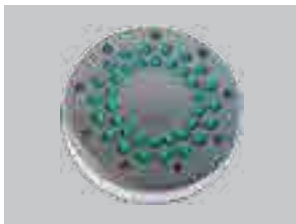
Computer control system with remote control	Overhead shower with CFL light
Steam sauna	Hand shower
Water Massage	Telephone connectivity
Foot massage	Aroma therapy
Chromo therapy	SS Door Handle & Towel Bar
Ozone Purification	Thermostatic Mixer & Diverter
FM radio /CD Compatibility	Seat, Shelf and Mirror
Earth leakage protector	Exhaust Fan
Auto lock	Speaker
Timer	Integrated Overflow and Drainage System

SPECIFICATIONS

Size	1350 x 1350 x 2280 mm
Number of massage jets	6 Nos
Cubicle body panel	Acrylic panel & 6 mm safety glass with WREC coating
Steam generator	3000 W
Sliding door	2Nos

TUB SPECIFICATIONS

Massage tub cum shower tray	Anti skid acrylic with fiber reinforcement & SS structure
Tub colour	White
Water Massage Jets	6 Nos
Skirting	Front side corner model
Whirlpool pump	1 HP / 750W
Head rest pillow	1 No.



COMPARISON TABLE

PRODUCT CODE	MS 5001	MS 5003	MS 5004
DIMENSIONS(mm)	1500 x 1500 x 2260	1700 x 900 x 2130	1350 x 1350 x 2280
SAFETY GLASS	YES	YES	YES
MASSAGE TUB	YES	YES	YES
CUBICLE MASSAGE JET	6	14	6
BATH TUB WATER MASSAGE JET	6	6	6
BATH TUB AIR MASSAGE JET	6	0	0
LED CHROMO THERAPY LAMP	YES	YES	YES
OZONE GENERATOR	YES	YES	YES
STEAM SAUNA	YES	YES	YES
DRY SAUNA	NO	NO	NO
FAR INFRARED SAUNA	NO	NO	NO
ANTI SKID SHOWER TRAY	YES	YES	YES
COMPUTER CONTROL PANEL	YES	YES	YES

PRODUCT CODE	MS 5001	MS 5003	MS 5004	
REMOTE CONTROL	YES	YES	YES	
FM RADIO	YES	YES	YES	
TELEPHONE CONNECTIVITY	YES	YES	YES	
HOT & COLD MIXER	NO	NO	NO	
THERMOSTATIC MIXER	YES	YES	YES	
FUNCTION SELECTION	YES	YES	YES	
OVERHEAD SHOWER	YES	YES	YES	
HAND SHOWER	YES	YES	YES	
EXHAUST FAN	YES	YES	YES	
SHELF	YES	YES	YES	
SEAT	YES	YES	YES	
FOOT MASSAGER	YES	NO	YES	





◀ SC 2005 A

Kriztle's SC 2005-A is really a wonder shower cum sauna cubicle. It has several attractive features like a steam sauna, telephone and external CD connector. The unique design makes it fit snugly into a corner of the bathroom or any room . You can enjoy your shower in subdued white light while listening to FM Radio. Relax in the sauna or get body and feet massage with top shower or jets

FUNCTIONAL FEATURES

Computer control system	Timer
Steam Sauna	FM Radio with speaker
Chromo therapy	Seat, Shelf, Top Light & Exhaust fan
Overhead & Hand shower	Thermostat mixer and diverter
Telephone and external - CD - connectivity	Body Massage Jets
Foot massage	SS door handle
Auto lock	Sliding door
Earth leakage protector	Anti Skid Shower Tray

SPECIFICATIONS

Size	1000 x 1100 x 2130 mm
Total massage jets	10
Cubicle body panel	Acrylic & Safety Glass
Shower tray	Anti skid Acrylic
Steam generator	3000 W





SC 2009

Kriztle Aquapolis SC2009 is perfectly set in contrasting colours, white and black, giving a complete classy look for the cubicles. It has a perfect anti skid acrylic with S.S support, boosting the confidence in you from the fear of being skidded in the cubicle, even in any least possibilities. It provides you with an internally built seat to enjoy your bath even remaining seated in the cubicle. It gives you options for various kinds of bath like; steam bath, shower bath, massage bath as your physical temperament demands. It provides you rejuvenation are looking forward to have after a bath in the cubicle.

FUNCTIONAL FEATURES

Computer control system with remote control	Ozone purification
Steam Sauna	FM radio / CD connectivity
Foot massage	Speaker
SS Rain shower with chromo therapy	Aroma therapy
Hand shower	Thermostatic mixer & diverter
Telephone connectivity (Incoming)	Moulded shelves & seat, mirror
Auto lock	Exhaust fan
Timer	SS towel bar & door handle
Earth leakage protection	Body Massage Jets
	Anti Skid Shower Tray

SPECIFICATIONS

Size	1200 x 900 x 2080 mm
Total massage jets	6
Cubicle body panel	Acrylic & 6mm toughened glass with WREC Coating
Shower tray	Anti skid acrylic with SS support frame
Steam generator	3000 W



◀ SC 2012

The rectangle shaped Kriztle Aquapolis SC 2012 in coffee brown colour, with the wooden panel shaped anti-skid pallet, gives an imposing look. The cubicle, with most modern facility, provides you with various kinds of bath you wish to have according to the climatic conditions as well for the required physical fitness. The inbuilt 3000 W steam generator provides you a perfect steam bath, which has manifold therapeutic implications, providing a variety of health and beauty benefits, suitable for almost everyone as well as soothing and relaxing effect especially after the toil of the day.

FUNCTIONAL FEATURES

Computer control system with remote control	Auto lock
Chromo therapy	Timer
Multi flow hand shower	Ozone purification
Earth leakage protection	FM radio / CD connector
Aroma Therapy	Speaker
Exhaust fan	Telephone Connectivity
SS Door handle & towel bar	SS Overhead rain shower
Mirror	Thermostatic mixer & diverter
SS Shelf	Body Massage Jets

SPECIFICATIONS

Size	1100 x 1100 x 2170 mm
Total massage jets	6 Nos
Cubicle body panel	6mm toughened glass with SS frame
Shower tray	Anti skid pallet
Steam generator	3000 W
Roof	8 mm black safety glass





◀ SC 2015

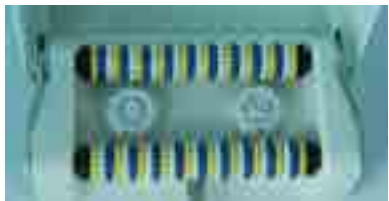
The steam sauna experience gets better with SC 2015. The new launch has more option to control the heat and its dispersal. Enjoy a great time in the sauna bath whether for rejuvenation or slimming.

FUNCTIONAL FEATURES

Computer control System with remote control	Fm Radio / Speaker
Steam sauna	Multiflow hand shower
Chromo therapy	Telephone connectivity
Ozone Purification	CD connectivity
SS Overhead Rain shower	Earth leakage protection
Foot Massage	Exhaust Fan
Thermostatic mixer & diverter	SS Door handle
Moulded shelf and seat	Auto lock
	Timer

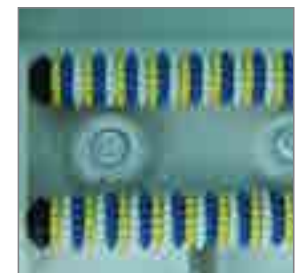
SPECIFICATIONS

Size	1000 x 1000 x 2100 mm
Total massage jets	6 Nos
Cubicle body panel	Acrylic with fiber reinforcement safety glasses
Shower tray	Antiskid acrylic Shower tray with SS support frame.
Steam generator	3000W



COMPARISON TABLE

PRODUCT CODE	SC 2005A	SC2009	SC2012	SC2015	
DIMENSIONS(mm)	1000 X 1100 X 2130	1200 x 900 x 2080	1100 x 1100 x 2170	1000 x 1000 x 2100	
SAFETY GLASS	YES	YES	YES	YES	
MASSAGE TUB	NO	NO	NO	NO	
TOTAL MASSAGE JET	10	6	6	6	
STEAM SAUNA	YES	YES	YES	YES	
DRY SAUNA	NO	NO	NO	NO	
FAR INFRARED SAUNA	NO	NO	NO	NO	
ANTI SKID SHOWER TRAY	YES	YES	YES	YES	
ELECTRONIC CONTROL PANEL	YES	YES	YES	YES	
REMOTE CONTROL	YES	YES	YES	YES	
FM RADIO	YES	YES	YES	YES	
TELEPHONE CONNECTIVITY	YES	YES	YES	YES	
HOT & COLD MIXER	NO	NO	NO	NO	
THERMOSTATIC MIXER	YES	YES	YES	YES	
FUNCTION SELECTION	YES	YES	YES	YES	
OVERHEAD SHOWER	YES	YES	YES	YES	
HAND SHOWER	YES	YES	YES	YES	
EXHAUST FAN	YES	YES	YES	YES	
SHELF	YES	YES	YES	YES	
SEAT	YES	YES	NO	YES	
FOOT MASSAGER	YES	YES	NO	YES	



◀ FIR SC 3000

Listen to music while having a refreshing sauna bath in the Aquapolis FAR Infrared SC 3000. With infrared heating, the bath also has ozone for using post bath. It has a comfortable stool to sit on while enjoying the sauna.

FUNCTIONAL FEATURES

Far Infrared sauna	Rain Shower
Ozone Purification	Fan
Steam Sauna	Lamp
Blue Tooth Connectivity	FM Radio / CD Connectivity
Computer Control System	Temperature Sensor
Roof Mounted & Back Lamp	Hot & Cold Water Mixer
Portable Seat	Antiskid Shower Tray
Hand Shower	Function SELECTOR
Autolock	Timer

SPECIFICATIONS

Size	1200 x 1000 x 2150 mm
Body Panel	6mm Tempered Glass with SS Fittings
Sauna	3 KW
Body Jet	6 Nos.



Available in
Black Colour also

SHOWER CUBICLE WITH DUAL SAUNA

◀ FIR SR 1000

Get the feel of real Scandinavian sauna at you home. Made of hemlock wood, the Kriztle Infrared dry sauna FIR SR 1000, is the ultimate experience in dry sauna. The Computer Control System sauna has top end infra red heater. And while getting yourself rejuvenated, you can listen to music with the USB.

FUNCTIONAL FEATURES

Far Infrared Sauna	Fan/1Pcs, Speaker /1Pcs
Computer Control System	FM radio
Sauna Heater	Seat
USB for Mp3	Timer
Exhaust fan	Temperature sensor
Earth leakage protector	Open door with wooden handle

SPECIFICATIONS

Size	950 x 950 x 2000mm
Body Panel	Hemlock Wood
Door	6 mm tinted safety glass with SS fitting
Far Infrared Panels and Heaters	
Back	300w 1Pcs
Front Corner:	500w 1Pcs
Feet	500w 1 Pcs
Floor	150w 1Pcs

INFRARED DRY SAUNA

◀ FIR SR 2000

Enjoy the relaxation of quality from the comfort of your home. The Infrared FIR SR 2000 is a perfect sauna cabin. You can use electronic gadgets inside while enjoying your sauna bath. Made of Hemlock wood, it is comfort unparalleled.

FUNCTIONAL FEATURES

Far Infrared Sauna	USB for Mp3
Computer Control System	Exhaust Fan
Sauna Heater	Speaker 2 Nos.
FM Radio	Inbuilt Seat
Earth Leakage Protection	Open Door with Wooden Handle
Timer	
Temperature Sensor	

SPECIFICATIONS

Size	1300 x 1000 x 2000 mm
Body Panel	Hemlock Wood
Door	6mm tinted safety glass with SS fitting
Far Infrared Panels and Heaters	
Sauna Heater	Back 300w – 3Pcs
Two Side	300w 2pics & 150w 2Pcs
Feet	500w 1 Pcs
Floor	150w 1Pcs

INFRARED DRY SAUNA

COMPARISON TABLE

PRODUCT CODE	FIR SC 3000	FIR SR 1000	FIR SR 2000
DIMENSIONS(mm)	1200 x 1000 x 2150	950 x 950 x 2000	1300 x 1000 x 2000
SAFETY GLASS	YES	ONLY DOOR	ONLY DOOR
HEMLOCK WOOD	NA	YES	YES
TOTAL MESSAGE JET	4	NO	NO
STEAM SAUNA	YES	NO	NO
DRY SAUNA	NO	NO	NO
FAR INFRARED SAUNA	YES	YES	YES
ANTI SKID SHOWER TRAY	YES	NO	NO
COMPUTER CONTROL PANEL	YES	YES	YES
REMOTE CONTROL	YES	YES	YES

PRODUCT CODE	FIR SC 3000	FIR SR 1000	FIR SR 2000	
FM RADIO	YES	YES	YES	
TELEPHONE CONNECTIVITY	NO	NO	NO	
THERMOSTATIC MIXER	NO	NO	NO	
FUNCTION SELECTION	YES	NO	NO	
OVERHEAD SHOWER	YES	NO	NO	
HAND SHOWER	YES	NO	NO	
EXHAUST FAN	YES	YES	YES	
SHELF	YES	NO	NO	
SEAT	YES	YES	YES	
FOOT MASSAGER	NO	NO	NO	



**BUILD
QUALITY**

STEAM SHOWER CUBICLES & MULTI SHOWER SYSTEMS

FULLY LOADED TO EXPERIENCE THE POWER BATH

Each range offers something unique, different expressions of durable beauty. Ergonomic, economic and aesthetic. Nothing can be truly practical if maladroit in its purpose. Nothing can be truly appealing if its appearance disappoints. Every part of every range in the Aquapolis portfolio is designed to be both functional and beautiful. Developed, tested and designed to last a lifetime, all the elements like hinges, handles, control units, nozzles etc. are durable and safe.

QUALITY AND DURABILITY

Kriztle Aquapolis shower cubicles are engineered with special focus on function, design and quality. With exemplary high quality components, state of the art engineering with cutting edge technology and certified production quality each shower cubicles is designed to give you trouble free performance for a longtime.

FUNCTIONAL CONFIGURATIONS

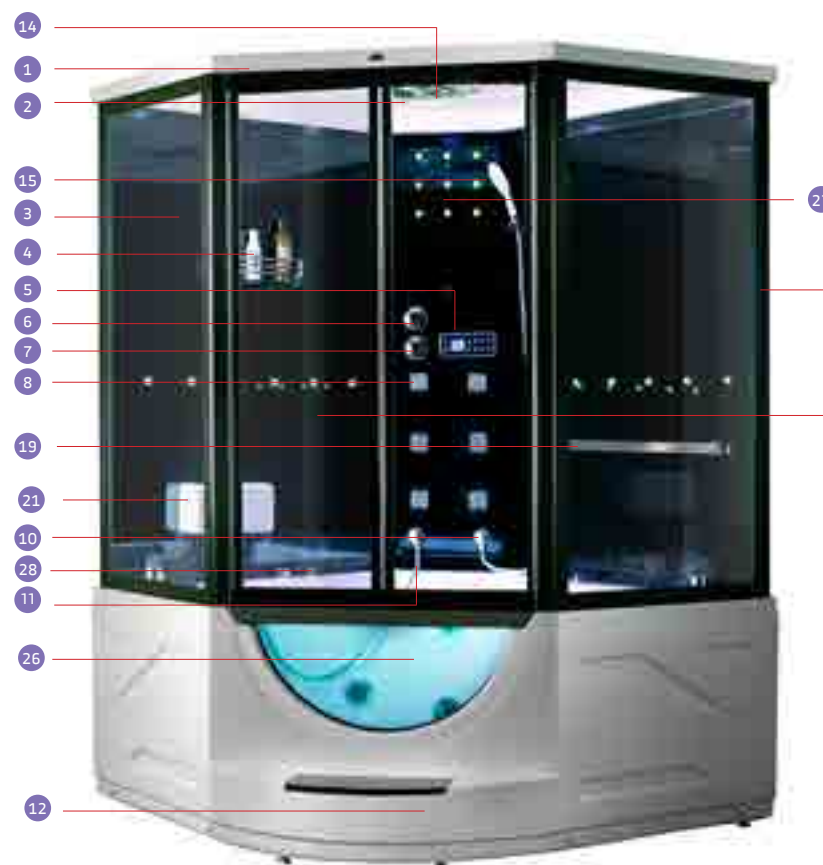
- COMPUTER CONTROL PANEL
- REMOTE CONTROL
- STEAM SAUNA
- FAR INFRARED SAUNA
- WATER MASSAGE JETS / AIR MASSAGE JETS
- OVERHEAD RAIN SHOWER
- MULTI FUNCTION HAND SHOWER WITH SLIDING RAIL

- HANDY SHELF
- FM RADIO & C D FUNCTION
- OZONATOR
- EXHAUST FAN
- LIGHT UNIT
- EARTH LEAKAGE PROTECTOR
- SAFETY GLASS
- NON SLIPPERY SHOWER TRAY
- TELEPHONE CONNECTIVITY
- BACKGROUND LIGHT
- FOOT MASSAGER
- HOT & COLD MANUAL & THERMOSTATIC MIXER
- FUNCTION SELECTOR
- TOWEL BAR
- SEAT
- MIRROR
- STEAM HERB BOX
- ELECTRICAL STANDARD : 220V/50HZ
- ALL ELECTRICAL COMPONENTS ARE CE CERTIFIED



FUNCTIONAL CONFIGURATION

PARTS OF MULTI - SYSTEM



PARTS OF CUBICLE



- | | |
|---------------------|---------------------------|
| 1 ROOF | 15 HAND SHOWER |
| 2 OVERHEAD SHOWER | 16 MIRROR |
| 3 ACRYLIC PANEL | 17 PAINTED GLASS PANEL |
| 4 SHELF | 18 ALUMINIUM FRAME |
| 5 CONTROL SCREEN | 19 TOWEL BAR |
| 6 DIVERTER | 20 DOOR HANDLE |
| 7 THERMOSTATIC KNOB | 21 FOOT MASSAGER |
| 8 BODY MASSAGE JET | 22 AROMATHERAPY DISPENSOR |
| 9 SEAT | 23 DRAIN |
| 10 ELBOW CONNECTOR | 24 DOOR HINGES |
| 11 CONNECTION HOSE | 25 DOOR GLASS |
| 12 TRAY | 26 MASSAGE TUB |
| 13 FIXED GLASS | 27 ALUMINIUM PANEL |
| 14 ROOF LAMP | 28 SPOUT |

BOTTOM SIDE OF TRAY



QUALITY AND DURABILITY

Krizzle Aquapolis shower cubicles are engineered with special focus on function, design and quality. With exemplary high quality components, state of the art engineering with cutting edge technology and certified production quality each shower cubicles is designed to give you trouble free performance for a long time.

MULTI SYSTEM

BODY MASSAGE JET

Contains small nozzles through which water comes under pressure and hits the body providing a massaging effect. Number of jets: Varies in each model from 6 - 10 nos. Material: Varies in each model from ABS, nylon or PVC.



WHIRLPOOL PUMP

Available in multi-system shower cubicles only. The whirlpool pump is used for providing pressure to the massage jets in the tub.

Power output: 1 H.P

Rated power: 220 V A.C



MASSAGE TUB

Features: Whirlpool pump for hydro massage/water massage • Air pump for air bubble massage (available in selected models) • Chromotherapy led light • Water filling spout • Water pressure regulator • Electronic/air regulated on-off switch • Moulded seat • Anti-skid floor

Material: All the tubs are made from acrylic which is provided with fibre reinforcement and has stainless steel frame support at the base and around the acrylic.



AIR PUMP

Available in selected multi-system shower cubicles only. The air pump is used for bubble massage in the massage tub.

Power output: 1 H.P

Rated power: 220 V A.C



PILLOW/HEADREST

For relaxing when using the water massage of the multi system.



TUB FILLING SPOUT

The water is filled in the tub through this spout.

Material: Brass chrome plated.



TUB ON/OFF

Air operated switch for operating the massage jets of the bath tub



CHROMOTHERAPY

Chromotherapy, sometimes called color therapy, colorology or chromatherapy, is an alternative medicine method, which is considered pseudoscience. Chromotherapists claim to be able to use light in the form of color to balance "energy" lacking from a person's body, whether it be on physical, emotional, spiritual, or mental levels.



MULTI SYSTEM & SHOWER CUBICLES

MAIN CONTROL BOARD

Is the power source & controlling unit of all the electronic and electric parts in the shower cubicle.



STEAM GENERATOR

This unit converts the water to steam for steam sauna. Solenoid valves control the entry and drainage of water.

Heating element : Copper coil.

Power consumption : 3000 watts.

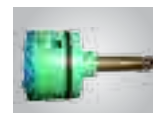
Water capacity : 1 liter



DIVERTER CARTRIDGE

Made of a ceramic disc housed inside plastic casing. This unit distributes the water from the mixer to the rain shower, body massage jets, foot massager or hand shower.

The types of diverter available are 3-way, 4-way and 5-way diverters depending on the model.



ROOF

Placed on top to close the cubicle and prevent escape of steam..

Accessories installed: overhead shower • Roof lamp • Speaker • Exhaust fan • Chromotherapy LED (selected models)

Material : Can be acrylic or toughened glass.



TEMPERATURE SENSOR

Senses the temperature inside the cubicle and displays the current temperature on the screen.



OVERHEAD SHOWER WITH ROOF LAMP & COVER

Placed on the roof of the cubicle. The overhead shower has a minimum 50 nozzles for water outlet.

Material: ABS/304 grade stainless steel.

The roof lamp is either cfl or led light and covered with a milky white polycarbonate sheet.



SPEAKER

Rating: 8 OHMS / 10 W

Quantity provided: 1 no.



CHROMOTHERAPY LED LIGHT

Can be found on the roof/panel/glass of selected models steam cubicles and also inside the tub of multi-system steam cubicles.



QUALITY AND DURABILITY

AROMATHERAPY DISPENSOR

Functions as the outlet for steam. Provision for inserting cotton which is dipped in essential oil to spread the vapor with steam during steam sauna.

THERMOSTATIC MIXER CARTRIDGE

A safety device to prevent scalding. The main principle is from a special wax which responds quickly to the temperature. Once we set a temperature the hot and cold water are mixed in the desired ratio to achieve that temperature. If by any chance cold water is not available and only hot water is available, the thermostat cuts off the hot water preventing scalding on the user.

MIXER/THERMOSTAT & DIVERTOR HOUSING

This unit houses the mixer/thermostat & divertor inside. It is from this unit that the respective hose for each unit is connected.

Material: Brass chrome plated.

No.of connections: Depends on the model.

HAND SHOWER

Made of ABS chrome plated. Depending on the model the hand shower can have 3 type of flow or single flow.

FUNCTION DIVERTOR CARTRIDGE

Made of ceramic disc housed inside plastic casing. It has 2 inlets - one for the hot water and the other for the cold water. By adjusting the position, the hot and cold water gets mixed or closes either the hot or cold water inside. The water comes out through the outlet.

SEAT

(Available in selected models)

Molded seat with the panel or tub for relaxing when using the steam sauna.

TOUCH CONTROL SCREEN

Switches on & off all the electronic and electrical functions.

Display: LCD type

Functions: power on-off light on-off

- Steam on-off • Exhaust fan on-off • Telephone on-off
- FM/CD on-off • Ozonator on-off • Up & down key to adjust the vol./Change frequency of FM/adjust the temperature of the steam in the cubicle/adjust the time duration for the steam • Tuning selector key • Emergency alarm key • FM station key • Keypad unlock key.



PARTS DESCRIPTION

EXHAUST FAN

Rating: D.C. 12 V / 5 W

Quantity provided: 1 no.



FOOT MASSAGER

(Available in selected models only)

This unit is used for massaging the bottom of the feet. It is comprised of 2 rollers and 2 water jets. It has a foldable lid which can be closed and hung when not in use.



DOOR HANDLE

MATERIAL : Handles may be made of S.S. or brass chrome plated.



OZONATOR

(Available in selected models only)

Function: Reduces need for high chemical doses

- Helps destroy bacteria, viruses, algae, yeasts
- Oxidizes other contaminants
- Reduces odour and chloramines
- Prolongs equipment life
- Reduces maintenance time & cost
- Ozone is environment friendly

Power : 12 V



FILTER ELBOW

Material : Brass chrome plated with built-in steel net.

Function : Being a sophisticated equipment, all massage tubs are provided with an easy to clean filter elbow, which like the name suggests filters the water from any large debris, entering the unit thereby blocking the cartridges, jets, pump, etc.



ADJUSTABLE LEGS

Material: Screw made from Galvanised Iron with rubber bushing moulded to it.



REMOTE CONTROL

Rating: DC. 3 V

Battery required: AA size (2 nos.)



PROFILE FRAMES

The aluminium profiles are strong and sturdy and will retain stability for many years. Also the powder coated or polished finishes will retain the original shine.



SS HINGES AND HANDLES

The extra durable stainless steel hinges and handles add to the total stability of the unit and its contemporary shapes and fine finish enhance the aesthetic appeal too.



DOORS

Cushioned magnetic door closures ensure soundless quiet closing and water tight solutions for even high pressure showers in all the models of aquapolis shower cubicles and in the rolling door models, the wheels are engineered to withstand wear and tear over a long period.



TOWEL ROD

A rod available for hanging the towel when using the steam sauna.

MATERIAL: Polished Stainless steel.



HANDY SHELVES

Shelves are available either molded on the panel or separate shelves for storage of handy items for use in the shower.



ACRYLIC BODY PANEL & SHOWER TRAYS

Chemical name is pmma (poly methyl methacrylate). We are using dupont brand acrylic sheets for its quality, color and finish. Once the acrylic sheet is moulded in the desired shape by a process known as “thermoforming”, 3 layers of fibre reinforcement is applied to give sturdiness to the sheet, and also to strengthen the sheet when a person is seated in the tub.

Color : White or black

Thickness of acrylic sheet : 2 mm

Thickness of fibre reinforcement : 3 mm

The high quality acrylic with fiber reinforcement will be stable and resist deformation, staining, scratches etc and will retain original gloss. The shower trays have non-slippery floors, which assure safety. Adjustable legs are provided for the trays with which you can adjust the level difference of the floor and also to increase or decrease the height.

SAFETY GLASS

The safety glass used for aquapolis cubicles meet the rigorous requirements of european safety standards DIN EN 12150. It also ensures lasting quality and durable finish. All aquapolis safety glass will withstand extreme stresses. If extraordinary circumstances should cause breakage the glass will break into small fragments only so that risk is minimized.

WATER PRESSURE COMPATIBILITY

The massage jets, overhead shower, hand shower etc.

Are all tested up to 5 bar pressure for flawless performance. Also the hot & cold water conductors are S.S wired pipes with brass nuts to withstand high pressure.

WATER PRESSURE REGULATOR

Knob for controlling the pressure coming through the water jets of the massage tub.

Material: PVC with ABS chrome plated knob.

MATERIAL

Some are molded with the back panel while separate shelves are made of glass with shelve front made from brass chrome plated.

OTHER UTILITY COMPONENTS

While features like FM radio, Telephone connectivity add to the pleasure of your bathing, timer and temperature meter and control help you to effectively control the required temperature and time of your bathing.

Some of the features above are not available in all Aquapolis models. Please refer to item-wise specification chart to know the specifications of each model clearly



Krizzle introduces you to a world of healthy living with far infrared saunas. Infrared sauna is considered to be an effective tool for natural healing. It is known for its ability to slow down the ageing process considerably. Infrared rays penetrate into the skin and start the healing process. Some highlights include:

DETOXIFICATION

Sweating is Nature's way to keep the body cool and healthy. It flushes out the toxins as sweat. The infrared sauna makes you sweat profusely as the body gets heated directly in a deep, detoxifying detoxification at the cellular level.

BLOOD PRESSURE REDUCTION

With the deep heat induced by Far Infrared sauna, the heart performs better. It regularises the blood pressure and improves circulation. With regular use, the blood pressure becomes regulated and you get to live with a healthy heart.

RELAXATION

Complete relaxation and stress reduction is yet another highlight of Far Infrared saunas. Infrared sauna scores over traditional saunas as it provides gentle, soothing and therapeutic heat that promotes relaxation and improved sleep. The invigorating deep sweat relaxes completely.

WEIGHT LOSS

Krizzle's far Infrared saunas is a good option to get into a weight loss programme. The seating induced by infrared rays clears the body of toxins and excess fat too by burning excess calories. As the body starts feeling lighter, you feel more relaxed and confident.

YOUTHFUL SKIN

DETOXED CELLS AND TISSUES

PAIN RELIEF FOR MUSCLES AND JOINTS

GOOD FOR HEART

PAIN RELIEF

Most pains arise from poor metabolism and unequal distribution of energy flow in body. Infrared sauna regularises the body's metabolic rate and increases better energy flow, thus eliminating nagging pains. You feel a new energy in your joints and muscles with the pains and aches gone.

IMPROVED CIRCULATION

The far Infrared sauna systems from Krizzle improve blood circulation. The heating the muscles with infrared rays produces an increase in blood flow similar to that seen during exercise. Regular infrared sauna use – especially in the mid infrared range – can significantly stimulate blood flow up to twice the normal rate.

BETTER IMMUNITY

Krizzle's infrared heat therapy technology aids in cell health, muscle recovery and overall immunity defense. It makes you healthier and live longer. The heat fully stimulates the circulatory system and oxygenates the body's cells in an improved manner.

SKIN PURIFICATION

Krizzle's Far Infrared sauna purifies your skin. It opens up all those closed pores and with release of sweat, the toxins are all released. As a result, you get a glowing skin and youthful appearance. The best part is that the whole body gets this purification treatment at one go. With regular use, you start looking younger. What better anti aging programme can you ask for?

A person is relaxing in a bathtub filled with water and bubbles. A blue candle is lit on the edge of the tub, casting a soft glow. The background is a textured, light-colored wall.

What is Chromotherapy

It is the science of using colors to adjust body vibrations to frequencies that result in health and harmony. Humans need the Sun's light, which is broken into seven distinct rays, to live. If there is an imbalance in these colors within our bodies, it can manifest itself in mental or physical distress. Each color possesses frequencies of a specific vibration, and each vibration is related to different physical symptoms. Chromotherapy works on various energy points to help your body re-establish its natural balance. It accomplishes this via the full spectrum of visible light, each color of which addresses a separate bodily need.



Colour Body & Health

- | | |
|-----------------|--|
| ■ RED | - Activates the circulatory and nervous systems. |
| ■ STRONG PINK | - Acts as a cleanser, strengthening the veins & arteries. |
| ■ PINK | - Activates and eliminates impurities from the blood stream. |
| ■ ORANGE | - Energized and eliminates localized fat. Helps address asthma and bronchitis. |
| ■ STRONG YELLOW | - Strengthens the body and acts on internal tissues. |
| ■ YELLOW | - Reactivates and purifies the skin. Helps with indigestion and bodily stress. |
| ■ GREEN | - Acts as a relaxant. |
| ■ STRONG GREEN | - Provides anti-infectious, anti-septic, and regenerative stimulation. |
| ■ STRONG BLUE | - Lubricates joints. Helps address infections, stress and nervous tension. |
| ■ BLUE | - Stimulates muscle & skin cells, nerves and the circulatory system. |
| ■ INDIGO | - Helps address eye inflammation, cataracts, glaucoma and ocular fatigue. |
| ■ VIOLET | - Relaxes the nerves & lymphatic system. Addresses inflammation and urinary illness. |

SHOWER PANELS

Shower panels give bathrooms an identity. They add style to even the smallest of spaces. Various types of shower panels are available according to one's need. These are broadly categorised into hand shower panels, overhead shower panels and side shower panels. These systems are available in various sizes, textures, colors, budgets for decorating styles ranging from traditional to contemporary.

Water outflow in different modes like sprinkler, shower and cascade are available in shower panels. Overhead is the most loved, but we have side panels and massage jets too in some. Some come with sauna adjustments. With quality checked internal design, the shower panels from Kriztle ensure easy and uniform flow.

Shower panels are easy to install and great way to save space. It looks modern and is economic too. They come in different finishes.

AQUAPOLIS THERMOSTATIC SHOWER PANELS



Now enjoy your shower without bothering to control the temperature and mixing of hot and cold water. Kriztle presents a wide array of Thermostatic Shower Panels.

These wonder showers make everything so convenient. Made of stainless steel, they come in various finishes. All models have hand shower and head shower. In addition to that, they come fitted with body jets.

The high quality nozzles ensure that the water flow is perfect sprinkling. The knobs are placed at easy heights for you to enjoy the shower.

Page 62

AQUAPOLIS STEAM SAUNA SHOWER PANELS



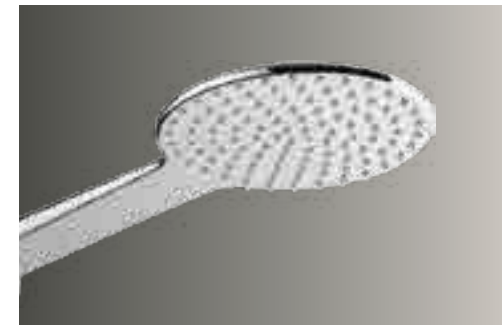
Kriztle brings you Steam Sauna Shower Panels with a difference. Made to global standards, each piece is a masterpiece of technical excellence. These computer controlled panels have a slew of attractive features which varies from model to model.

You can choose from models having features like Thermostatic function for Hot Water, Body Massage, Steam Sauna, Hand Shower, Rain Shower, FM Radio with Speaker, USB Connectivity and Telephone connectivity.

Get rejuvenated from a healthy sauna and a totally invigorating shower in style. The designer style shower panel adds beauty to your bathroom.

Page 69

AQUAPOLIS RAIN SHOWER



Nowadays, we are awfully pressed for some personal time, some time to devote for self indulgence. Kriztle's Rain shower series promise you a whale of a time in the shower. This extra wide shower recreates the rain for you when you feel like it.

Made of 304 Grade SS polished finish, the rain shower series is made to global standards in quality. Enjoy a refreshing moment in the rain shower by kriztle. Get amorous with having a close moment with your loved one in the cascade which is big enough to drench two.

What are you waiting for? Buy yourself a rain shower by Kriztle and get ready for rain dance.

Page 74



◀ SL 2003

Krizzle Aquapolis SL 2003 shower panel made of grade AISI 304 stainless steel in stainless steel stands chic with all sophistication and functionality. The showerhead can provide you a soothing shower as well as a comforting waterfall, which is the major magnetization of the shower panel. It has six multi directional body jets with chrome finish, giving the much-needed stimulation for your body. The comparatively small hand shower giving a very cute look, with SS double lock flexible tube, is lengthy enough to give more comfort and luxury for your bath.

FUNCTIONAL FEATURES

Thermostatic control for hot water

Water fall shower

Hand shower

Rain Shower

Body Jet & Spout

SPECIFICATIONS

Size	1600 x 220 mm
Body panel	Grade AISI 304 stainless steel
Colour	Brushed steel
No. of jets	6 multi directional body jets, Brass with chromo finish
Shower Head & Water fall rain shower	304 grade SS with Silicon
Hand Shower	Brass with 1.5 Mtr. SS double lock Flexible tube with Rubber Nozzles
Diverter	4 separate function selector / 2 way function selector for rain shower & water fall
Spout	Brass spout



◀ SL 2008

The mirror finish-black coloured Krizzle Aquapolis SL 2008, which is made of grade AISI 304 stainless steel, gives a complete majestic look, giving you a feel that you belong to an elite class. The four multi directional body jets in brass with chrome finish, arranged on the stem of the shower panel, gives an added classiness to the panel. The four separate functional knobs on the side of the panel stem help you to opt the various functions, without any kind of confusion, to provide you a complete bath-experience with Krizzle shower panel.

FUNCTIONAL FEATURES

Thermostatic control for hot water

Head shower

Hand shower

Body Jet & Spout

SPECIFICATIONS

Size	1550 x 180mm
Body Panel	AISI 304 Grade SS
Colour	Mirror Finish - Black
Shower head	AISI 304 Grade SS with silicon rubber nozzles
Hand shower	Brass 1.5 Mtr. SS double lock flexible tube
No. of jets	4 multi directional body jets, brass with chrome finish
Spout	Brass spout
Diverter	4 separate functional selector





◀ SL 2009

Kriztle Aquapolis SL 2009 shower panel in mirror finish-rose gold colour and fully molded in grade AISI 304 stainless steel shines like a gem in your bathroom, giving a royal look for your restroom. The four-multi directional body jets in brass chrome finish that are artistically and systematically fixed on the shower panel stem double its magnetization. The showerhead with 50 nozzles slightly bended upwardly gives you a perfect shower. The four-multi directional body jets fixed in appropriate height can stimulate your body, making you rejuvenated.

FUNCTIONAL FEATURES

Thermostatic control for Hot Water

Head shower

Hand shower

Body Jet & Spout

SPECIFICATIONS

Size	1600 x 200mm
Body Panel	AISI 304 Grade SS
Colour	Mirror Finish Rose Gold
Shower head	AISI 304 Grade SS with silicon rubble nozzles
No. of jets	3 Multi directional body jets in brass with chromo finish
Hand Shower	Brass with 1.5 Mtr. SS double lock flexi Tube
Function Selector	4 way function selectors
Spout	Brass





◀ SL 2010

Kriztle Aquapolis SL 2010 shower panel, in brushed steel with ebony red is wholly fashioned in grade AISI 304 stainless steel with designer glass, sets a new trend in your restroom. The shower panel has a unique showerhead, chrome plated with silicon rubber nozzles, offering you a feel of soothing precipitation within your bathroom. The four separate functional knobs on the side of the stem, with the corresponding symbol, help you to select the kind of bathing experience you wish to have, without any puzzlement.

FUNCTIONAL FEATURES

Thermostatic control for Hot Water

Head shower

Hand shower

Body jets & spouts

SPECIFICATIONS

Size	1450 x 200mm
Body Panel	AISI 304 Grade SS with designer Glass
Colour	Brushed steel with ebony Red
Shower head	ABS chrome plated with silicon rubber nozzle
No. of jets	3 Multi directional body jets
Hand Shower	Brass with 1.5 Mtr. SS double lock flexi Tube
Function Selector	4 Separate function selectors
Spout	Brass spout





◀ SSL 3000

Keep it simple and elegant. The futuristic SSL 3000 is for people who move with times. For so simple looking a product, the product comes packed with feature like varying body jets, function control, top and hand shower options.

FUNCTIONAL FEATURES

Computer control panel	FM Radio with Speaker
Thermostatic function for Hot water	USB Connectivity
Body Massage	Telephone connectivity
Steam Sauna	Temperature Sensor
Hand Shower	Auto cleaning system for steam generator
Rain Shower	Earth leakage protection

SPECIFICATIONS

Size	1900 x 220 x 90 mm
Body Panel	304 Grade Stainless Steel
Finish	Brushed Steel Satin Finish
Steam Generator	3 KW
Spout	ABS spout
Mixer	Thermostatic mixer with Vernett Cartridge
Body jet	2 multi-directional
Overhead shower	304 grade SS
Divertor	4 way functional selection



◀ SSL 3000 A

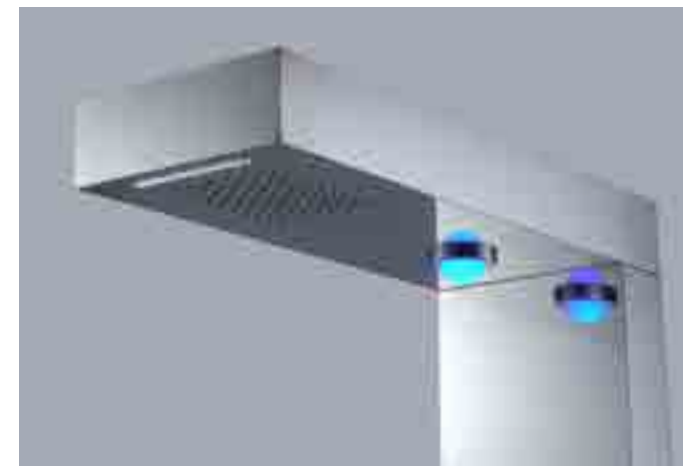
The macho design from Kriztle gets full meaning in Aquapolis Wellnessware SSL 3000 A. It comes with sturdy steel body with top and handshower. The touch friendly display panel helps you choose the pressure.

FUNCTIONAL FEATURES

Computer Control Panel	Bluetooth / Telephone Connectivity
Body Massage Jet	FM Radio Connectivity
Chromo Therapy	Aroma Dispenser
Hand Shower	Temperature Sensor
Rain Shower	Auto Cleaning System for Steam Generator
Steam Sauna	Earth Leakage Protection
Led Lamp	

SPECIFICATIONS

Size	1580 x 230 x 80mm
Body Panel	AISI 304 Stainless Steel
Colour	Mirror Finish
Shower Head Nozzles	304 grade SS silicon rubber nozzles
Hand Shower	ABS with 1.5mtr SS double lock flexible tube
Diverter	3Way Function
Mixer	Hot and cold Mixer
Steam Generator	3KW
Body Jet	4 multi-directional





◀ SSL 5000

Listen to music , sing in rain.... with the new Steam Shower Panel SSL 5000. Steam, shower and music...what more can you ask for.

FUNCTIONAL FEATURES

Computer Control Panel

Steam Bath

Body Massage

Rain Shower

Hand Shower

Panel Light - Chromotherapy

Telephone/Bluetooth Connectivity

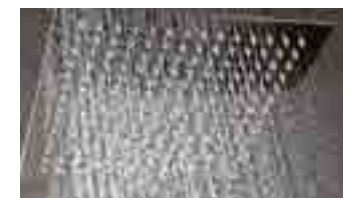
Auto Cleaning System

FM Radio with Speaker

Earth Leakage Protection

SPECIFICATIONS

Size	1630 x 260 x 114mm
Panel	8mm Tempered Glass, Aluminum, and Stainless Steel
Rain Shower	SS 304 Grade 10"
Hand Shower	ABS Hand Shower
Steam generator	3KW
No. of body Jets	4 multi-directional
Rain Shower Size	10" x 10" 304 grade SS
Divertor	3 way
Mixer	Hot & Cold
Steam vents	6 Nos.





◀ SSL 4000

The SSL 4000 is a bold style statement that is so futuristic in design that you get transported to a different realm altogether. With auto drain, and smooth finish and panel lights, it is the decor that every bathroom requires.

FUNCTIONAL FEATURES

Computer control panel

Steam Sauna

FM Radio with Speaker

USB Connectivity

Panel light

Auto drain function

Dry Run Prevention

Telephone Connectivity

Temperature Sensor

Auto Cleaning System

Earth Leakage Protection

SPECIFICATIONS

Size	1630 x 260 x 114mm
Body Panel	8 mm Tempered Front Glass , Aluminum & Stainless Steel
Steam Generator	Compatible for 3, 4, 5, 6 kw Steam Generator
Color	Black
Steam Vents	6 Nos.





INFRARED SAUNA SHOWER PANEL

FIR SL 1000

The futuristic Infrared FIR SL1000 is absolutely magical. It has inbuilt infrared for heating. You can enjoy the options of rain shower and hand shower. It comes in Black colour which looks classy and adds to the decor of the bathroom.

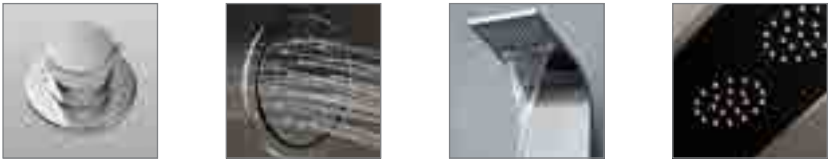
FUNCTIONAL FEATURES

- Far Infrared Sauna
- Rain Shower
- Hand Shower
- Earth Leakage Protection

SPECIFICATIONS

Size	1900 x 250 x 690 mm
Body Panel	Black Aluminum
Colour	Black
Infrared Sauna Heater	205W
Mixer	Hot & Cold
Far Infrared Panels	200w - 1 No. 150w - 1 No.
Overhead Shower	ABS with higher grade silicon nozzle
Hand shower	ABS with chrome
Divertor	2 way

COMPARISON TABLE



PRODUCT CODE	SL 2003	SL 2008	SL 2009	SL 2010	SSL 3000	SSL 3000A	SSL 5000	SSL 4000	FIR SL 1000
DIMENSIONS (mm)	1600 x 220 mm	1550 x 180 mm	1600 x 200 mm	1450 x 200 mm	1900 x 220 x 90 mm	1580 x 230 x 80 mm	1630 x 260 x 114 mm	1630 x 260 x 114 mm	690 x 248 x 1900 mm
BODY PANEL	AISI 304 Stainless Steel	304 Grade SS	304 Grade SS	AISI 304 Grade SS with designer Glass	304 Grade Stainless Steel	304 Stainless Steel	8mm Tempered Glass, Aluminum and Stainless Steel	8 mm Tempered Front Glass, Aluminum & Stainless Steel	Black Aluminum
BODY PANEL COLOUR	Brushed steel	Mirror Finish - Black	Mirror Finish Rose Gold	Brushed steel with ebony Red	Brushed Steel	Mirror Finish	BLACK	BLACK	BLACK
RAIN SHOWER	YES	YES	YES	YES	YES	YES	YES	NO	YES
WATER FALL	YES	NO	NO	NO	NO	NO	NO	NO	NO
THERMOSTATIC MIXER	YES	YES	YES	YES	YES	YES	YES	NO	NO
DIVERTOR FUNCTION	SINGLE	SINGLE	4 WAY FUNTION	SINGLE	4 WAY	4 WAY FUNTION	3 WAY	NO	2 WAY
SPOUT	Tipton Brass spout	Brass spout	Brass	Brass spout	ABS spout	NO	NO	NO	NO
STEAM SAUNA	NO	NO	NO	NO	YES	YES	YES	YES	NO
FAR INFRARED SAUNA	NO	NO	NO	NO	NO	NO	NO	NO	YES
ELECTRONIC CONTROL PANEL	NO	NO	NO	NO	YES	YES	YES	YES	YES
FM RADIO	NO	NO	NO	NO	YES	YES	YES	YES	NO
HAND SHOWER	YES	YES	YES	YES	YES	YES	YES	NO	YES
TELEPHONE CONNECTIVITY	NO	NO	NO	NO	YES	YES	YES	YES	NO
USB CONNECTIVITY	NO	NO	NO	NO	YES	YES	YES	YES	NO



BUILD QUALITY SHOWER PANELS

Kriztle aquapolis heavy-duty shower panels combine modern design and high performance. It is designed and engineered to deliver you uninterrupted power bath every day. It reaches you pre-assembled and pre-water tested.

DURABLE BODY PANELS: Aquapolis heavy-duty shower panels come with grade AISI: 304 stainless steel or grade 5052 aluminium alloy. These materials are known for stability and resistance to corrosion and rusting. As such, the body panels will remain stable for many years. In addition, these materials are easy to clean and the finish can be retained with regular maintenance.

HIGH WATER PRESSURE COMPATIBILITY: Aquapolis heavy-duty shower panels are tested for pressure compatibility of 116 PSI or 8 bar. All the components are provided accordingly. However, for the comfort of your body, maintenance of water pressure in the range of 55-65 PSI is recommended.

SOLID WATER DISTRIBUTION: Stainless steel braided g-hose made of 100% innocuous heatproof epdm material with non-twist double locked brass nuts are used for hot and cold-water distribution to showers and jets. It ensures leak proof water flow even when the water pressure is up to 80 PSI. The inner diameter of this pipe is expandable and have good flow rate compared to normal connection pipes.

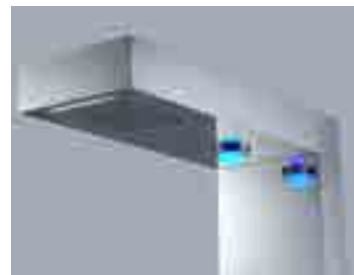
HOT & COLD WATER MIXERS AND DIVERTERS: Solid brass mixers and diverters are provided for trouble free control of all the functions of the heavy-duty shower panels. The mixer cartridges are certified for 30,000 movements. The high quality chrome plating ensure long lasting lustre.

OVER HEAD RAIN SHOWERS: Bigger diameter embedded overhead rain showers with waterfall are provided in most of the models for enhanced bathing pleasure.

MULTI DIRECTION BRASS SHOWER JETS: The brass shower jets are compatible with high water pressure. The high-grade rubber nozzles resist clogging. They are easy to clean and ensure flawless performance of the massage shower system. Depending upon the design 4-8 jets are provided and each jet can deliver 2.5 GPM water at a water pressure of 65 PSI.

HAND SHOWERS: The abs hand showers with double lock flexible stainless steel tubes are leak protected, easy to handle and add versatility to your shower.

BRASS SPOUTS: As a customization, the aquapolis heavy duty shower panels comes with brass spout for easy tub filling.



PARTS DESCRIPTION

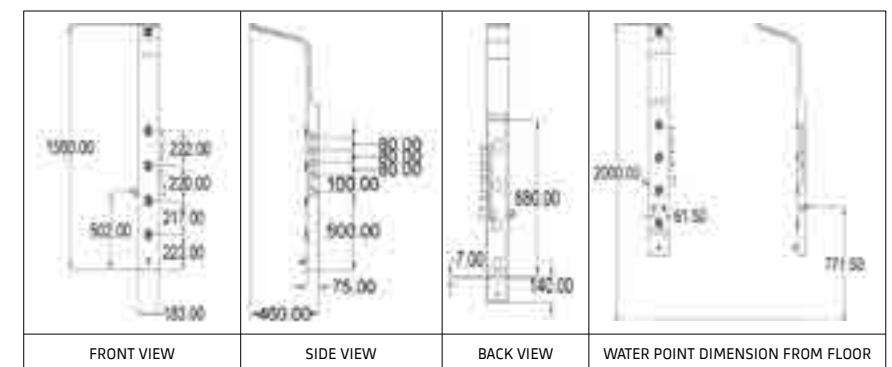


Dimension: 1560 mm x 183 mm x 75 mm
Body Material: Ti-coated Black Stainless Steel (AISI* 304 Grade)
Finish: Mirror Finish
Sheet Thickness: 1.0 mm

*American Iron and Steel Institute

Water Output from Rain Shower (1 No.) - 6.4 litres / min*
 Water Output from Body Massage Jet - 5.9 litres / min*
 Water Output from Hand Shower - 9.3 litres / min*
 Recommended Water Pressure - 3-4 Bar

*The water output results are approximate results based on standard test condition tested at 4 bar pressure. Results may vary from site to site for various reasons.



All dimensions given in mm



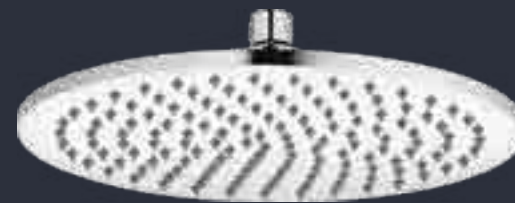
RS 2001



RS 2002



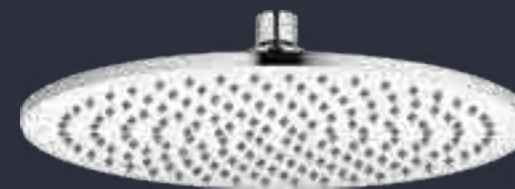
RS 2003



RS 2004



RS 2005



RS 2006



RS 2007

RAIN SHOWER

Ever felt like if you could play in rain once again? Krizzle brings you wide rain shower to create the feel of rain inside your bathroom. Now, pull all stops and relish a real wild bath.

Some of the showers in this range come with the additional feature of a cascade. It feels just like bathing in a waterfall. Get amorous and have a sensuous bath together in the wide square rain showers.

FEATURES

304 grade SS polished finish

Brass ball joint

G 1/2" silicon nozzles

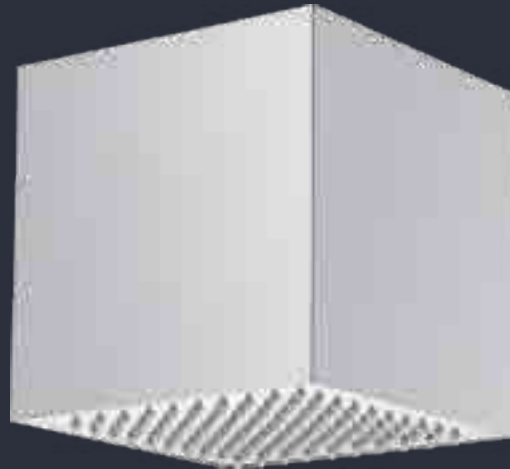
Thickness 11 mm

SPECIFICATIONS

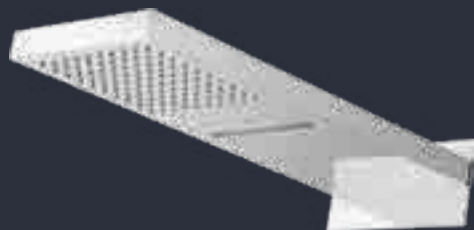
RS 2001	Size: 300 x 200 mm
RS 2002	Size: Dia: 300 mm
RS 2003	Size: 300 x 300 mm
RS 2004	Size: Dia: 350 mm
RS 2005	Size: 350 x 350 mm
RS 2006	Size: Dia: 400 mm
RS 2007	Size: 400 x 400 mm



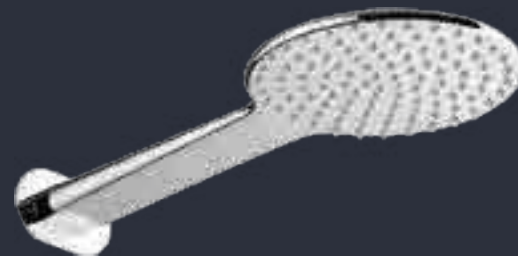
RS 2100



RS 2200



RS 3001



RS 3002

◀ RAIN SHOWER

Ever felt like if you could play in rain once again? Kriztle brings you wide rain shower to create the feel of rain inside your bathroom. Now, pull all stops and relish a real wild bath.

Some of the showers in this range come with the additional feature of a cascade. It feels just like bathing in a waterfall. Get amorous and have a sensuous bath together in the wide square rain showers.

FEATURES

304 grade SS polished finish

Brass ball joint

G 1/2" silicon nozzles

SPECIFICATIONS

RS 2100	Size: Dia: 200 x ht 100 mm
RS 2200	Size: Dia: 200 x 200 x ht 100 mm
RS 3001	Size: 500 x 200 x 30 mm
RS 3002	Size: 500 x 200 mm

SHOWER ENCLOSURES & PARTITIONS

Kriztlé presents a comprehensive range of glass enclosures and partitions which provides an easy and effective solution for the much wanted dry-wet area separation in your bath rooms. These sturdy and stylish glass enclosures are designed to keep your comfort zone dry, tidy and organized as well. Kriztlé glass enclosures and partitions are built to last. The frames are made of strong aluminium profile and finished with brilliant chrome plating to give that elegant look. Finest quality toughened glasses and spares such as cushioned magnetic door closer, durable and smooth gliding wheels, SS door handles, high performance drainage and fibre reinforced shower tray made of a highly durable, stain resistant composite material made of acrylic and ABS are used.

Aquapolis glass enclosures cater to a wide range of demanding individual requirements by offering wide and varied range of sizes and designs. Significantly these are easy to install and maintain. Choose from our versatile range of glass shower rooms and enjoy the ultimate convenience of an exclusive shower space within your bathrooms.

◀ SE 102, 107

The polished aluminium frame gives major magnetization to the quarter oval shaped Krizzle Aquapolis SE 102 & 107 enclosure. The 6 mm safety glass ensures safety as well as the watertight glass enclosure does not let water to spill over into your bathroom even when you enjoy your bathing at high water pressure.

SPECIFICATIONS

6 mm Safety Glass

Polished Aluminium Profile

Anti skid fibre reinforced shower tray

SS Door handle

Smooth Gliding Steady Wheels

Size

SHOWER ENCLOSURE WITH TRAY

SE 102 900 x 900 x 2000 mm

SE 107 1000 x 1000 x 2000 mm

SHOWER ENCLOSURE WITHOUT TRAY

SE 102 G 900 x 900 x 1850 mm

SE 107 G 1000 x 1000 x 1850 mm





◀ SE 103, SE 108

The marvelously designed Kriztle Aquapolis SE 103 & SE 108 shower enclosures with polished aluminum frame in perfect square shape are spacious, providing you a free movement within the enclosure. The door of the shower enclosure is wide enough to have an easy entry to and exit from the enclosure.

SPECIFICATIONS

- 6 mm Safety Glass
- Polished Aluminium Profile
- Anti skid fibre reinforced shower tray
- SS Door handle
- Smooth Gliding Steady Wheels

Size

SHOWER ENCLOSURE WITH TRAY

SE 103	900 x 900 x 2000 mm
SE 108	1000 x 1000 x 2000 mm

SHOWER ENCLOSURE WITHOUT TRAY

SE 103 G	900 x 900 x 1850 mm
----------	---------------------



◀ SE 105

The quarter oval shaped Kriztle Aquapolis SE 105 glass shower door enclosure comes with clear glass panels and options to mount your favourite shower panels and other necessary accessories, transforming your bathroom. The polished aluminum that are glittering in the light keeps the entire enclosure shining.

SPECIFICATIONS

6 mm Safety Glass
Polished chrome plated - Aluminum Profile
Anti skid fibre reinforced shower tray
SS Door handle
Smooth Gliding Steady Wheels

Size

SHOWER ENCLOSURE WITH TRAY

SE 105	1200 x 900 x 2000 mm
--------	----------------------

SHOWER ENCLOSURE WITHOUT TRAY

SE 105 G	1200 x 900 x 1850 mm
----------	----------------------



◀ SE 106 D (R/L)

The quarter oval shaped Kriztle Aquapolis SE 106 D (L/R) glass enclosure has a fully etched glass with a great design flowing from top to bottom of the glass. The enclosure provides an optional left or right alignment as you wish it to be. The enclosure also provides you glass shelves where you can keep your much loved bathroom items. It has a well-built anti skid ABS shower tray, providing you maximum safety while you enjoying your bath in the enclosure.

SPECIFICATIONS

6 mm Safety Glass

Polished Aluminium Profile

Anti skid fibre reinforced shower tray with SS frame

Glass Shelf

SS Door handle

Smooth Gliding Steady Wheels

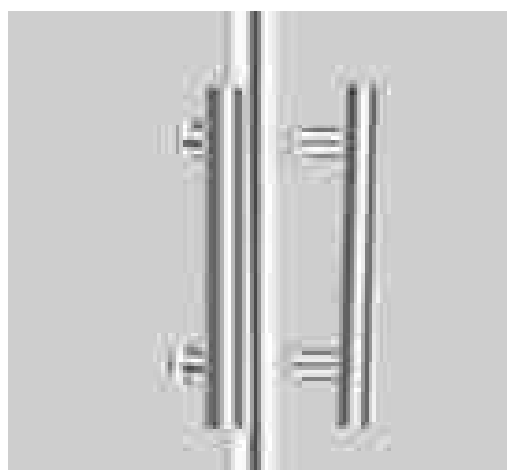
Alignment: Left or Right optional

Size

SHOWER ENCLOSURE WITH TRAY

SE 106 D
(Designer Glass)

1200 x 900 x 2000 mm



SP 101, SP 102, SP 103

The stylish Kriztle Aquapolis SP 101, SP 102 & SP 103 shower partitions offer a number of advantages and comforts in your intimate space, bathroom. The single sliding door of shower partition makes your entry to the shower area effortless and makes it spacious enough to have a free movement, without being hindered by the door, whereas the other glass panel is a fixed one.

SPECIFICATIONS

6 mm safety glass	Polished aluminium profile	Size	
Single sliding door	One fixed glass	SP 101	1200 x 2000 mm
S.S handle & S.S wheels		SP 102	1350 x 2000 mm
		SP 103	1500 x 2000 mm



SP 104, SP 105

The etched glass works and polished aluminium frame of Kriztle Aquapolis SP 104 & SP 105 shower partitions give a modish look for your bathroom. The shower partition always keeps your bathroom dry, non-slippery, and clean, preventing the soapy water in your shower area from splattering all over the bathroom floor even while you enjoy a power bath with Kriztle shower panel and rain shower.

SPECIFICATIONS

6 mm safety glass	Polished aluminium profile	Size	
Two sliding door	Two fixed glass	SP 104	1650 x 2000 mm
S.S handle & S.S wheels		SP 105	1800 x 2000 mm



◀ CSP 106

Enjoy your shower in style. The simple shower partition from Kriztle is actually a sophisticated addition to your bathroom. It has sliding glass door which moves on stainless steel rollers. The adjustable door panel makes it convenient to fix. The glass is 8mm thick and therefore durable.

SPECIFICATIONS

Single door glass partition with
One fixed glass and one door

Adjustable brass bracket, make the shower sturdy

8mm Toughened Glass

Bottom Stone (Optional)



CUSTOMIZED SHOWER PARTITION





◀ CSP 103

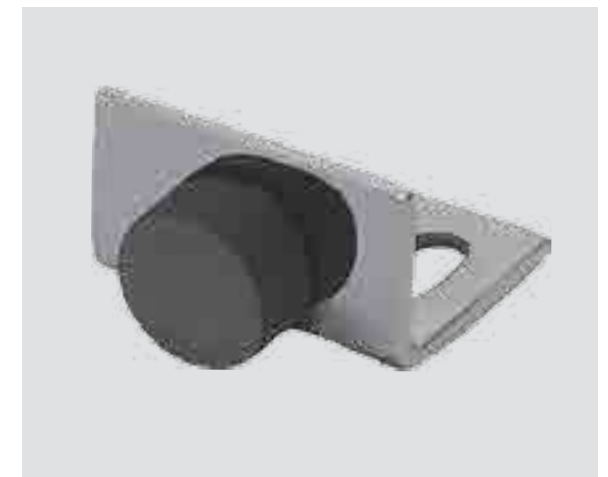
Krizzle's new CSP 103 is created with you in mind. It is just perfect for conventional bathrooms. It has a fixed glass portion as well as a door. The polished aluminium makes it last long.

SPECIFICATIONS

Single door glass Partition with
One fixed glass and one sliding door

Polished aluminium Profile

8mm Toughened Glass



CUSTOMIZED SHOWER PARTITION

◀ CUSTOMISED STEAM ROOM CUM SHOWER CABIN

Jazz up your life with the Krizzle Steam Room. Get refreshed in the steam or take a shower inside the cubicle made of toughened glass. The 8mm thick glass withstands temperature variation as well as wear and tear. The stainless steel rollers are perfect to roll the door apart and step in.

SPECIFICATIONS

8mm Toughned Glass
Standard Height 190CM
Brass Hardware
SS304 Rollers and Bars
High quality magnetic Strip for perfect sealing

STEAM GENERATOR CSG - 3-9 CONTROL PANEL



**BUILD
QUALITY**

SHOWER PARTITIONS & ENCLOSURES

Kriztle presents Aquafort, a comprehensive range of shower enclosures and partitions which provides effective solution for the dry-wet area separation in your bathrooms. Like the Aquapolis collection of wellness range, the Aqua fort product range is also engineered to excel.

SIZE

To cater to a wide range of demanding individual requirements, the Aquafort glass shower enclosures & partitions offer wide range of sizes and designs accordingly. For all models, an enhanced total height of 2000 mm has been provided, which is 100 mm higher than the normal standards. This ensures no spill over of water in to the dry area of your bathroom, even when bathing at high water pressure. Safety Glass The 6mm safety glass used for Aquafort enclosures meet the rigorous requirements of European safety standards DIN EN 12150. It also ensures lasting quality and durable finish. Safety glass in all Aquafort models will withstand extreme stresses. If extraordinary circumstances cause breakage, the glass will break into small fragments only so that risk is minimized. For most models the option of plain glass or designer glasses is available.

ALUMINIUM PROFILES

The 1 mm thick polished aluminium profiles are strong and sturdy and will retain

stability for many years. Also the polished finish will retain the original shine

DOORS

The door frames are made of equally thick aluminium profiles and will retain stability. Cushioned magnetic door closures ensure soundless quiet closing and water tight for even high pressure showers in all the models of Aquafort shower enclosures and partitions. In the rolling door models, the wheels are engineered to withstand wear and tear over a long period. For shower partitions with length 1650mm and above, two 6mm fixed glasses and two 6 mm glass doors are provided to ensure stability. All the door sizes are wide enough for easy exit and entry. Dedicated Shower Trays The ABS shower trays for enclosures will be stable and resist deformation, staining, scratches etc. The shower trays have non-slippery floors, which assure safety. Adjustable legs are provided for the trays with which you can adjust the level difference of the floor and also to increase or decrease the height. High Performance Drainage Fitted with drainage system that can drain up to 35 liters/minute. SS Handles The extra durable stainless steel handles add to the total stability of the unit and its contemporary shapes and fine finish enhance the aesthetic appeal too.



PARTS DESCRIPTION



CUSHIONED MAGNETIC DOOR
CLOSER



DOORS WITH SS HANDLES



POLISHED ALUMINIUM FRAME &
SAFETY GLASS



HIGH PERFORMANCE DRAINAGE



SMOOTH GLIDING STEADY
WHEELS



CHANNELS



WHEEL



KNOB



D BRACKET



HINGE



STOPPER



CORNER JOINT



L CLAMP

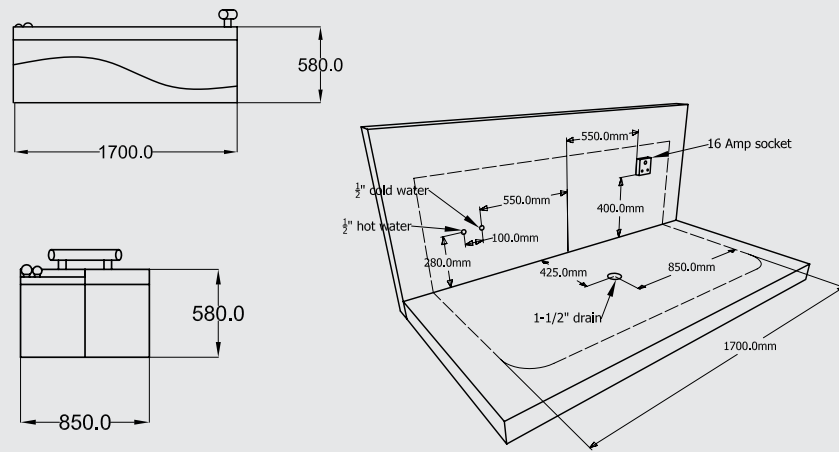


U CHANNEL

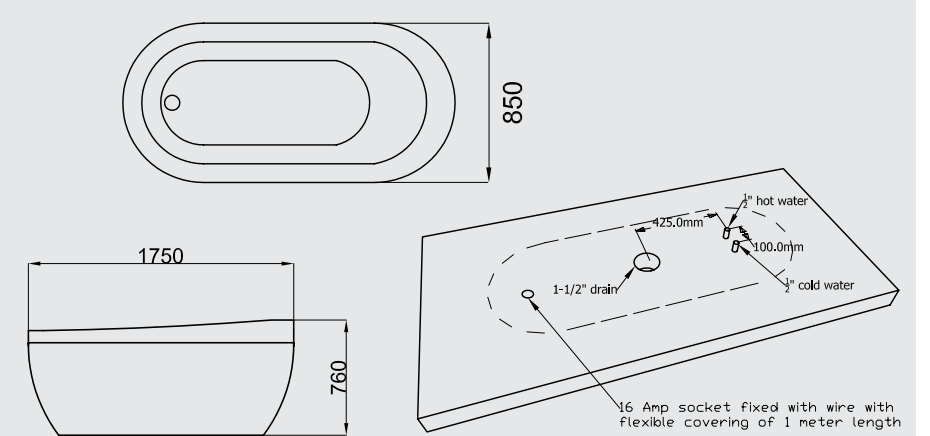
AQUAPOLIS WELLNESSWARE

TECHNICAL SPECIFICATIONS

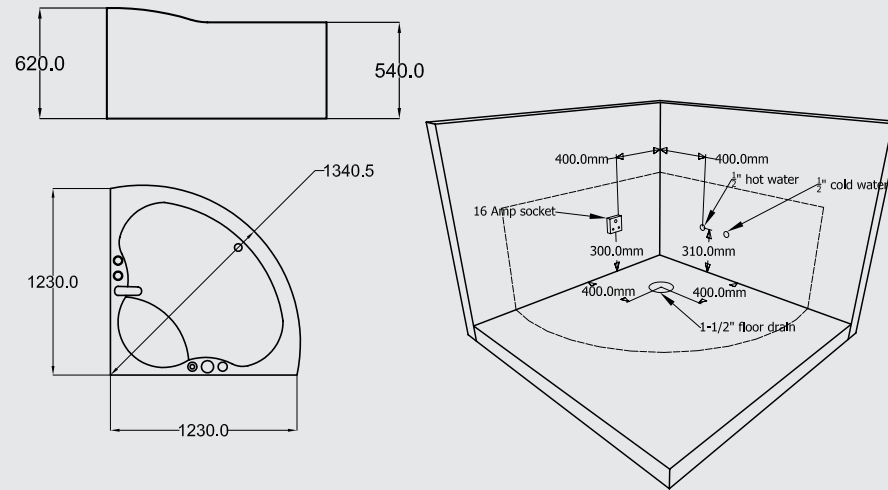
AQUAPOLIS
WELLNESSWARE
HYDRO MASSAGE
BATH TUB
BT 1002



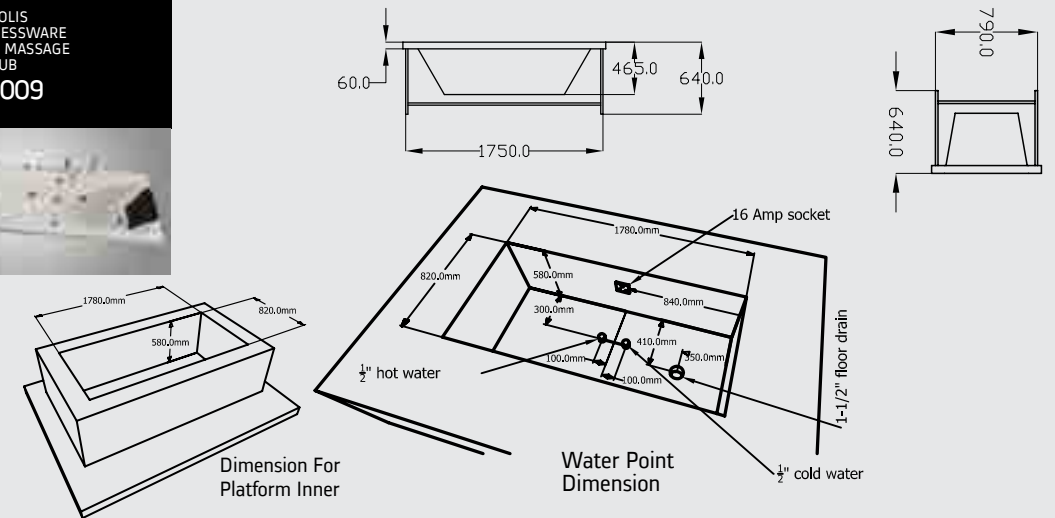
AQUAPOLIS
WELLNESSWARE
HYDRO MASSAGE
BATH TUB
BT 1005



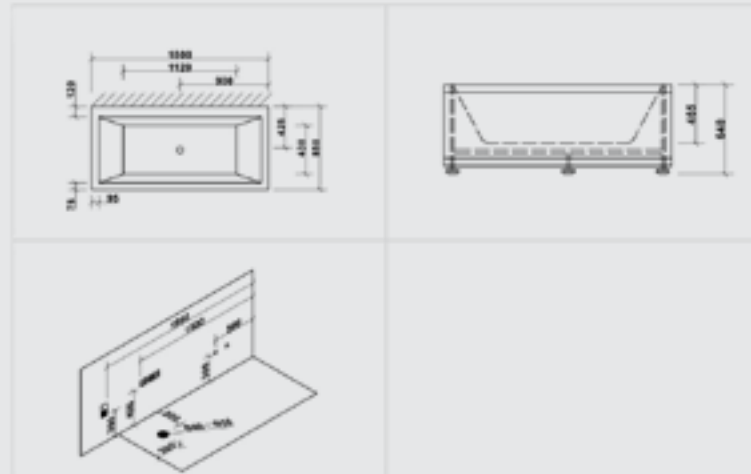
AQUAPOLIS
WELLNESSWARE
HYDRO MASSAGE
BATH TUB
BT 1007



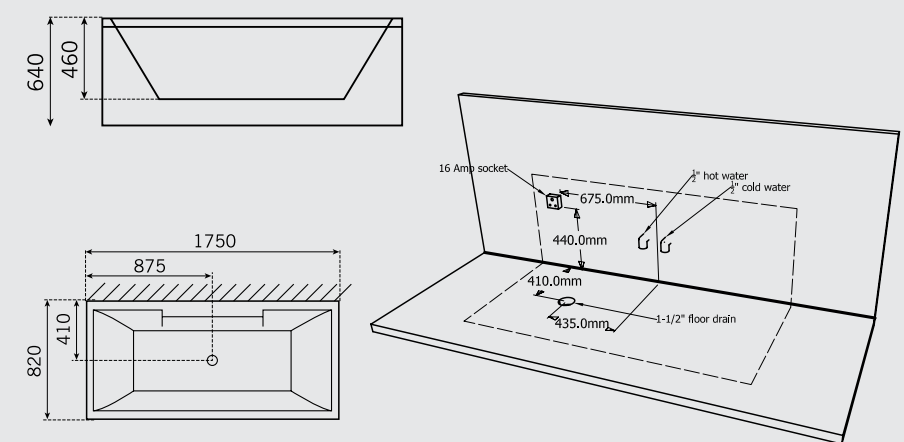
AQUAPOLIS
WELLNESSWARE
HYDRO MASSAGE
BATH TUB
BT 1009

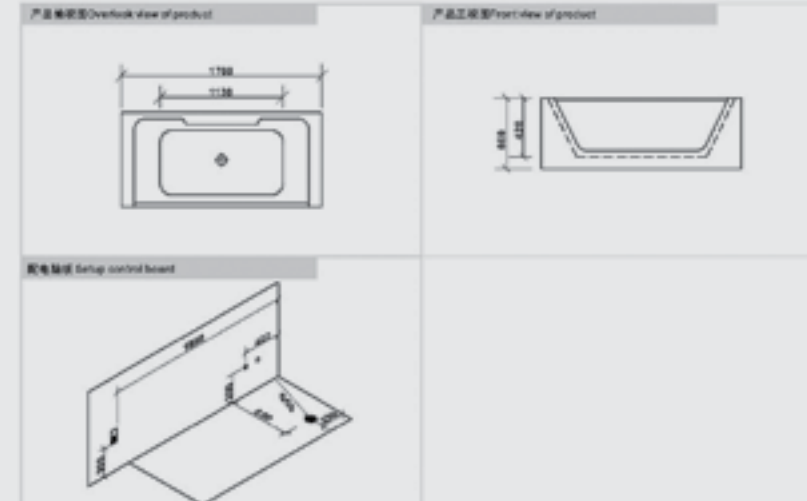
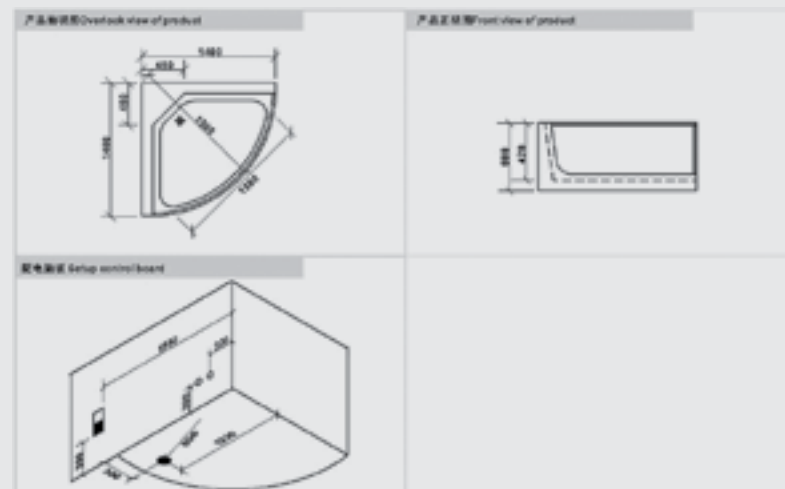
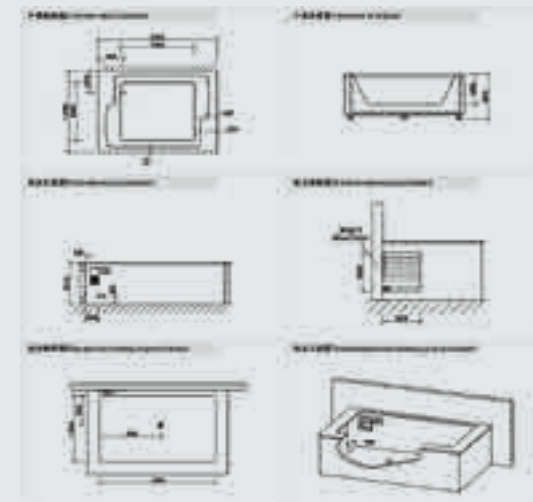
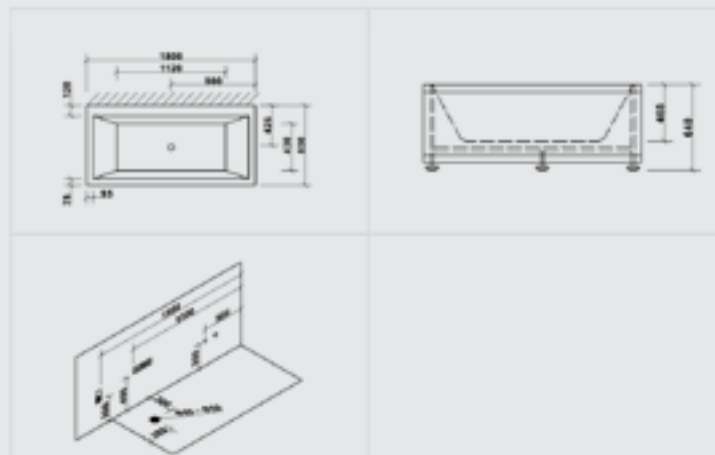
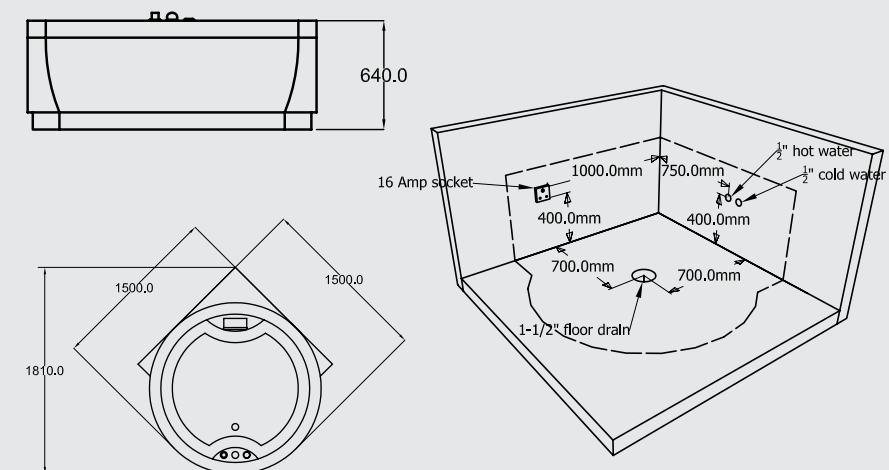
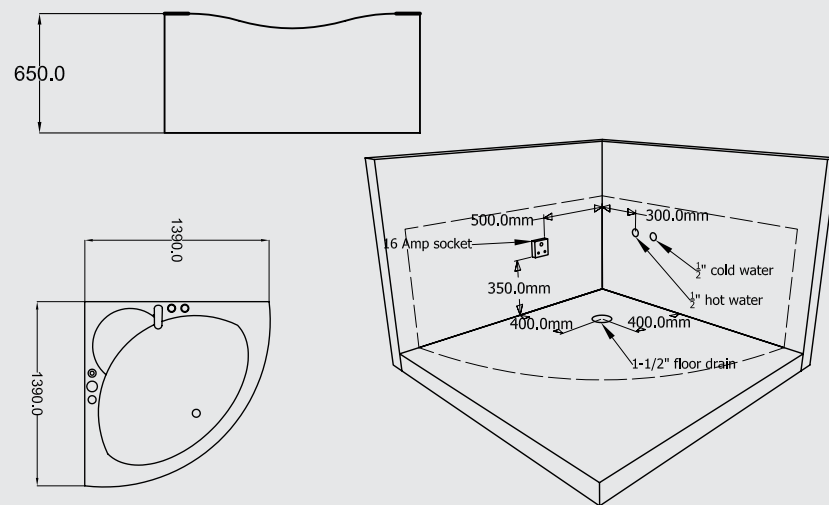


AQUAPOLIS
WELLNESSWARE
HYDRO MASSAGE
BATH TUB
BT 1010

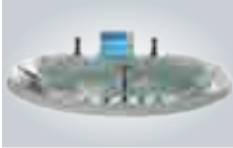


AQUAPOLIS
WELLNESSWARE
HYDRO & BUBBLE
MASSAGE BATH TUB
BT 2006

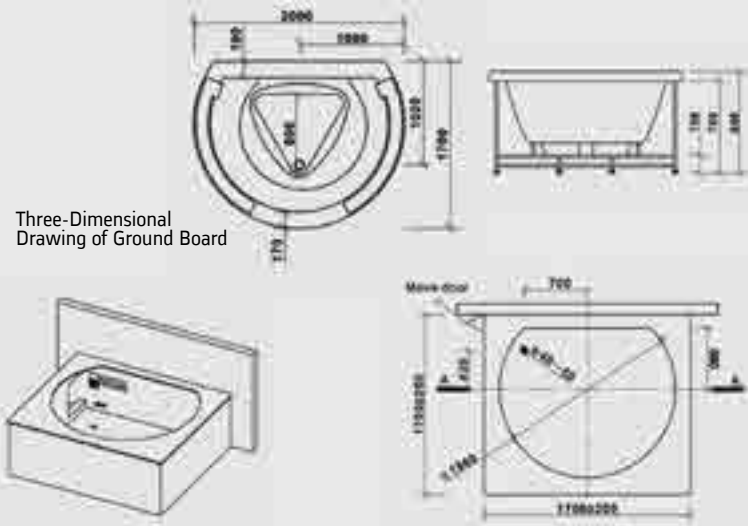




AQUAPOLIS
WELLNESSWARE
INDOOR SPA
ISP 1001



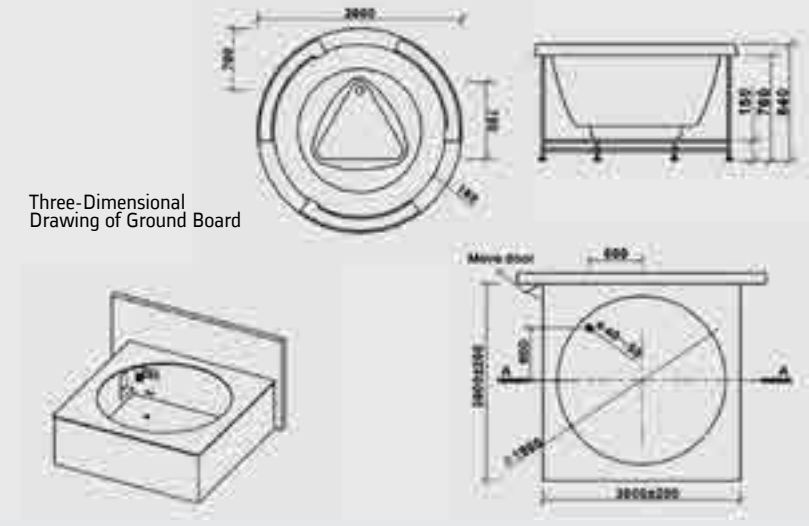
Three-Dimensional
Drawing of Ground Board



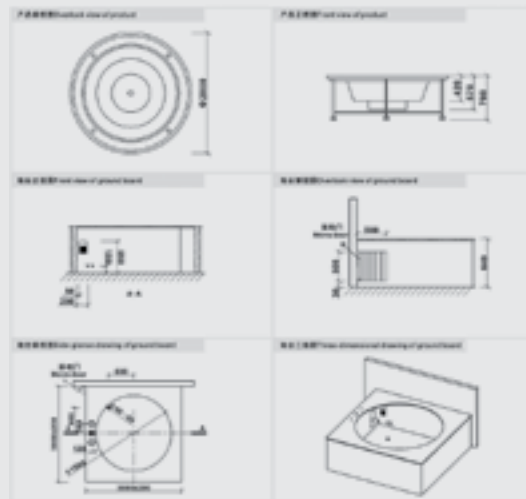
AQUAPOLIS
WELLNESSWARE
INDOOR SPA
ISP 1005



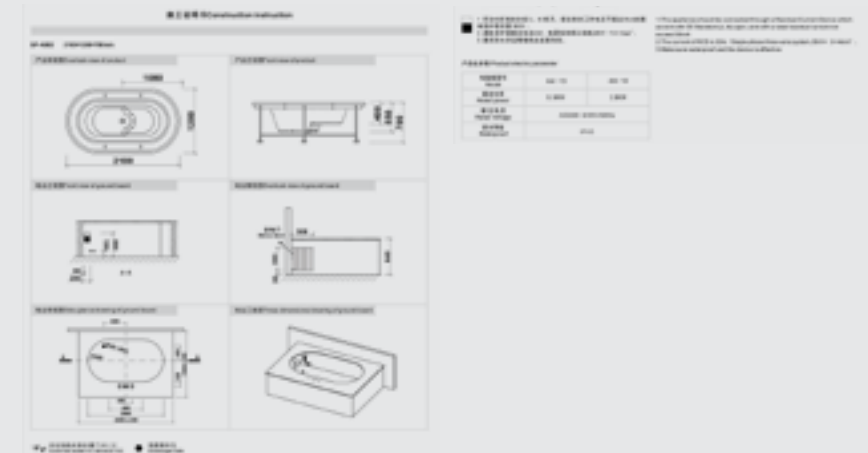
Three-Dimensional
Drawing of Ground Board



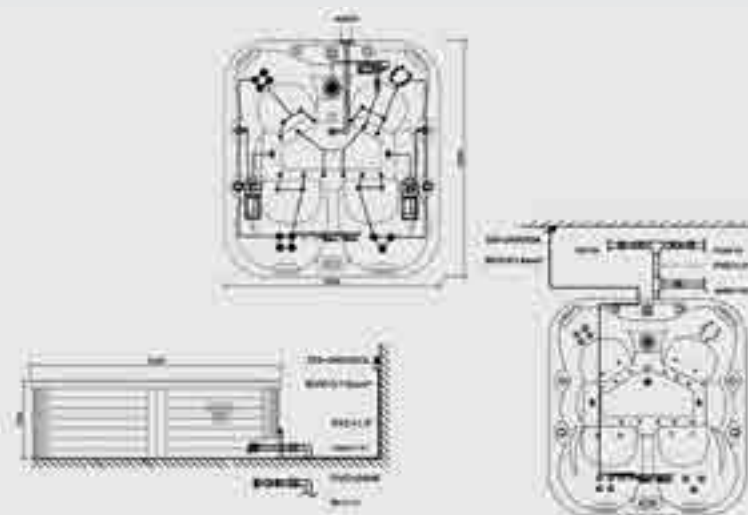
AQUAPOLIS
WELLNESSWARE
INDOOR SPA
ISP 1006



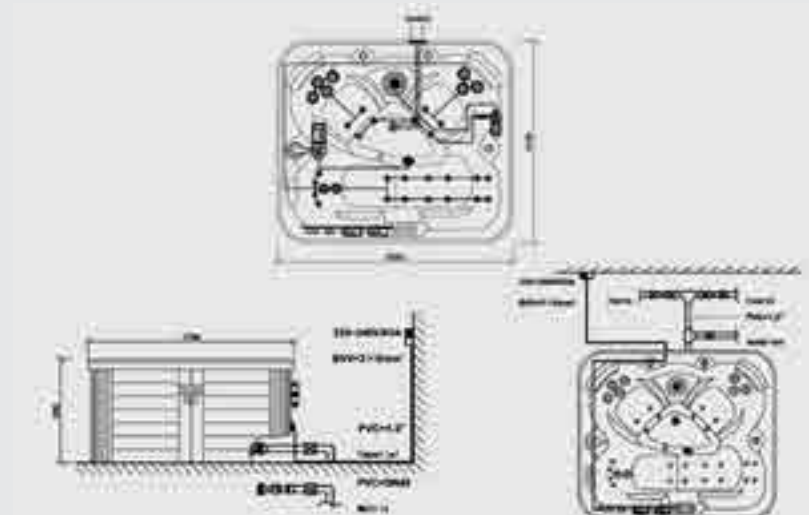
AQUAPOLIS
WELLNESSWARE
INDOOR SPA
ISP 1007



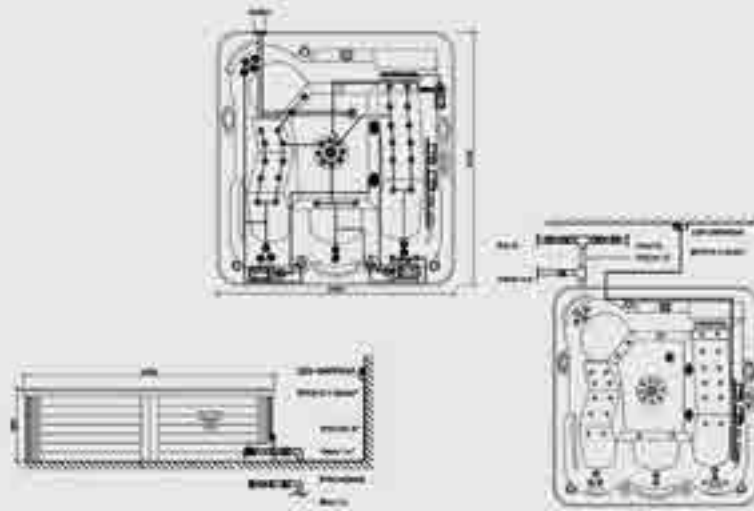
AQUAPOLIS
WELLNESSWARE
OUTDOOR SPA
OSP 1003



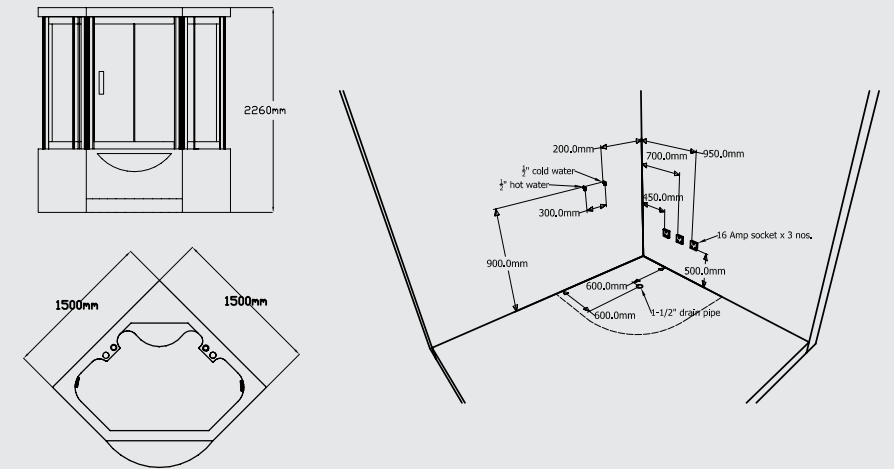
AQUAPOLIS
WELLNESSWARE
OUTDOOR SPA
OSP 1004



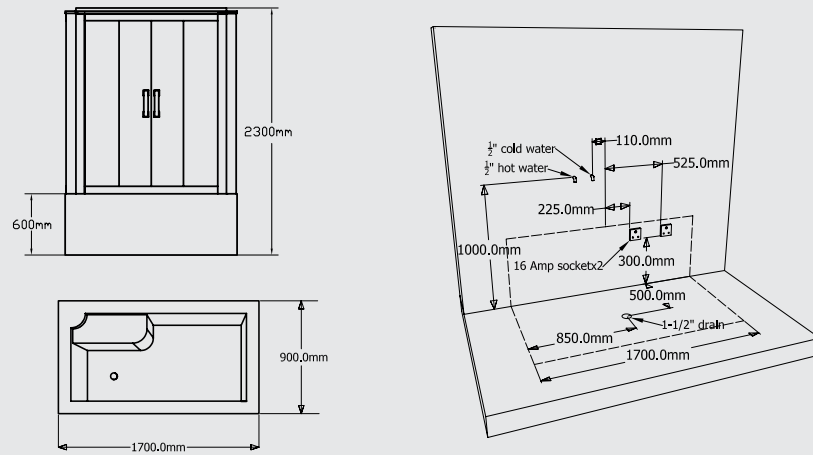
AQUAPOLIS
WELLNESSWARE
OUTDOOR SPA
OSP 1006



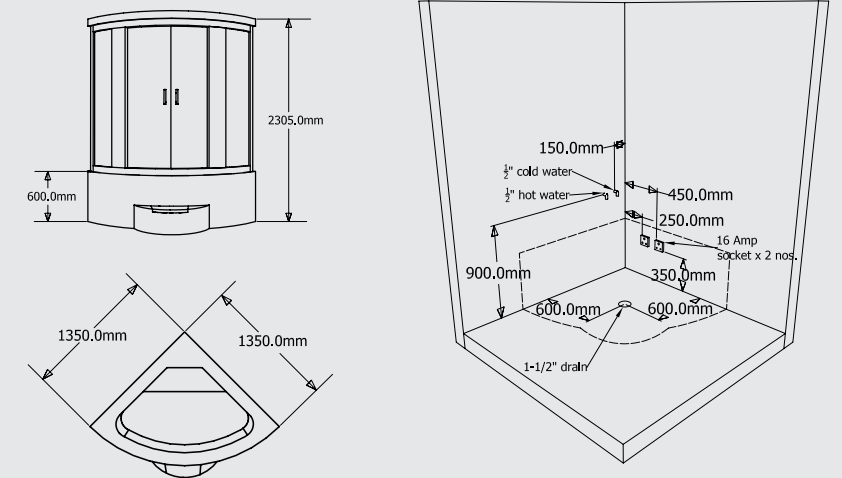
AQUAPOLIS
WELLNESSWARE
SHOWER CUBICLES
MS 5001



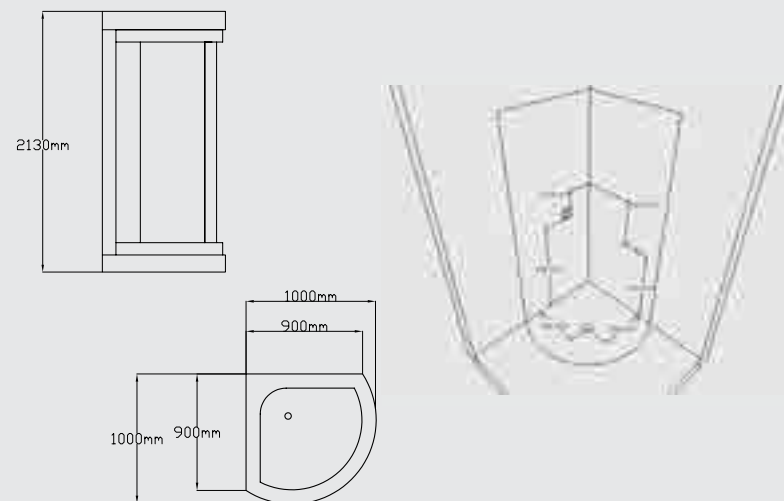
AQUAPOLIS
WELLNESSWARE
SHOWER CUBICLES
MS 5003



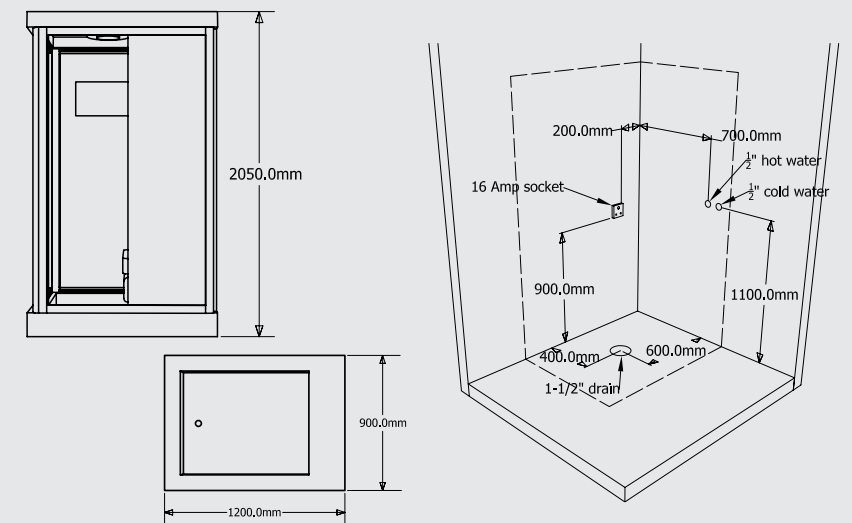
AQUAPOLIS
WELLNESSWARE
SHOWER CUBICLES
MS 5004



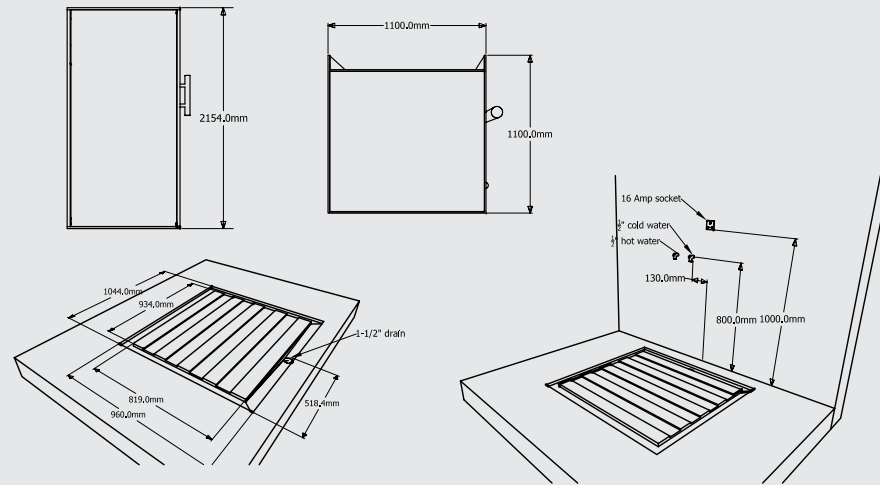
AQUAPOLIS
WELLNESSWARE
SHOWER CUBICLES
SC 2005 A



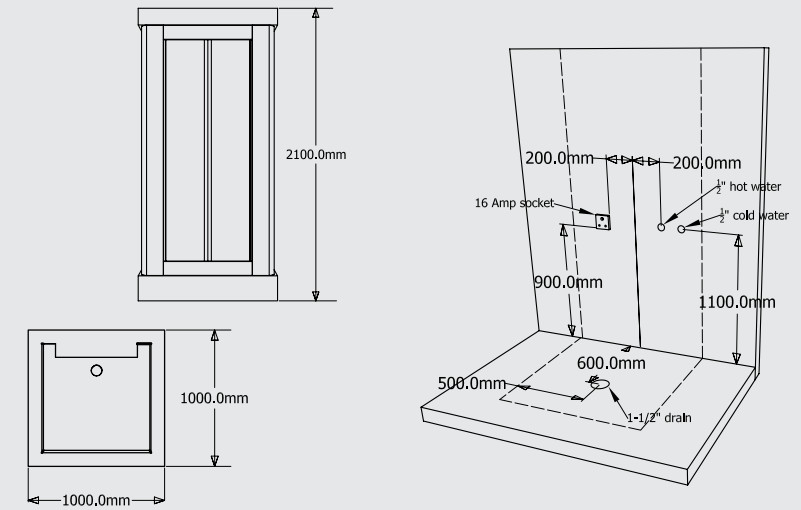
AQUAPOLIS
WELLNESSWARE
SHOWER CUBICLES
SC 2009



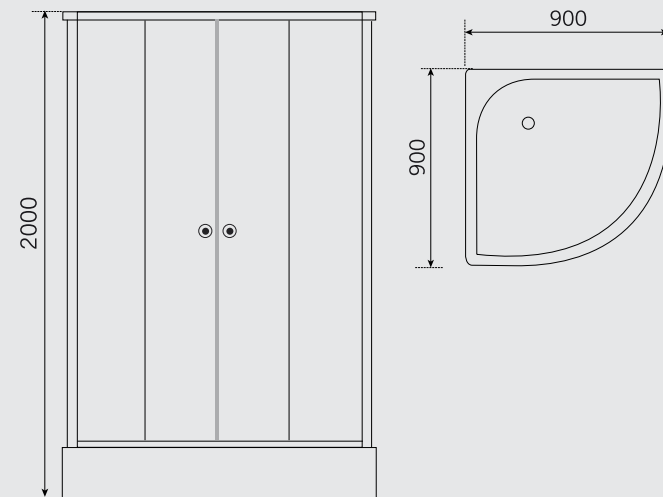
AQUAPOLIS
WELLNESSWARE
SHOWER CUBICLES
SC 2012



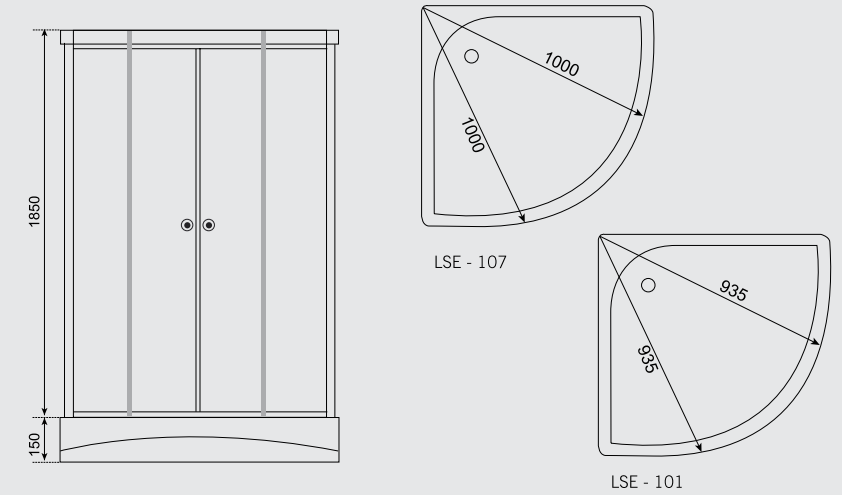
AQUAPOLIS
WELLNESSWARE
STEAM SHOWER CUBICLE
WITH STEAM SAUNA
SC 2015



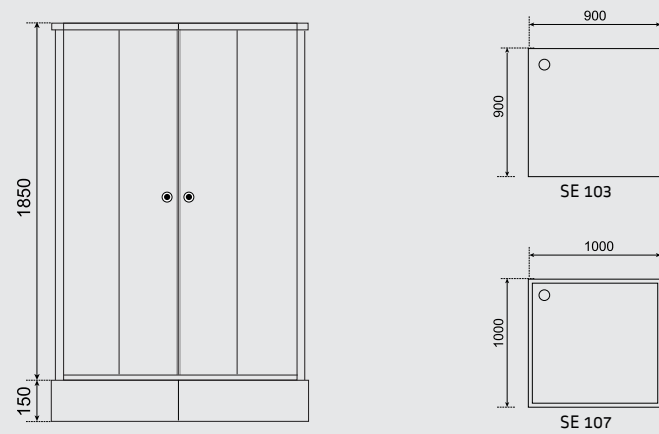
AQUAPOLIS
WELLNESSWARE
SHOWER ENCLOSURE
SE 102



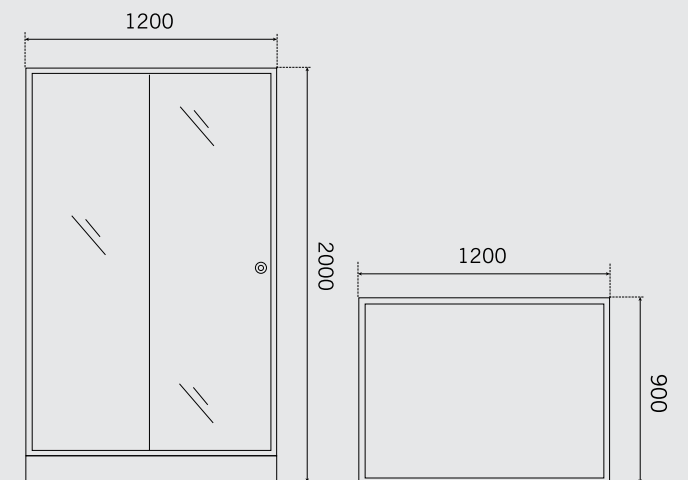
AQUAPOLIS
WELLNESSWARE
SHOWER ENCLOSURE
SE 107



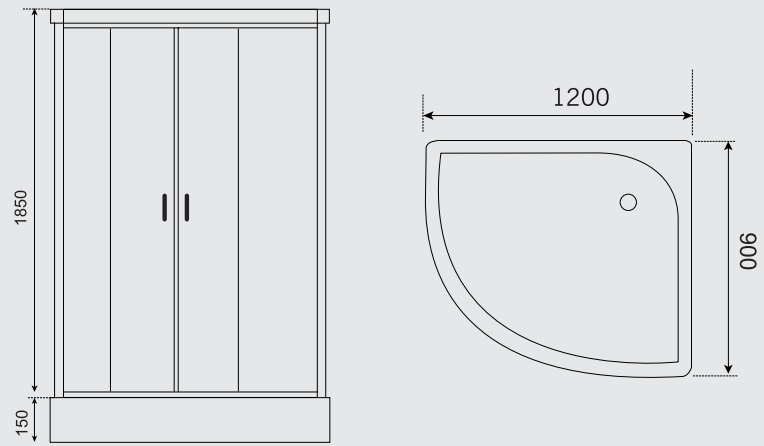
AQUAPOLIS
WELLNESSWARE
SHOWER ENCLOSURE
SE 103, 108



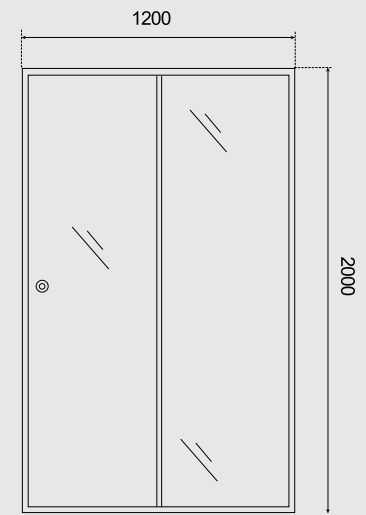
AQUAPOLIS
WELLNESSWARE
SHOWER ENCLOSURE
SE 105



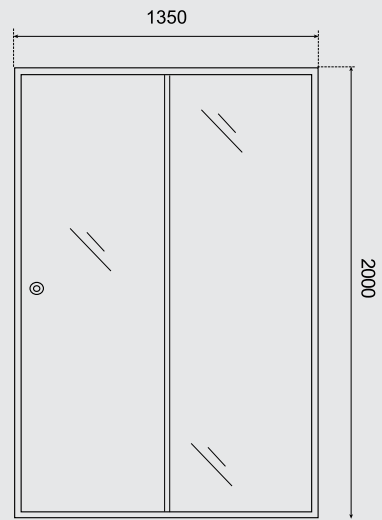
AQUAPOLIS
WELLNESSWARE
SHOWER ENCLOSURE
SE 106 D (L / R)



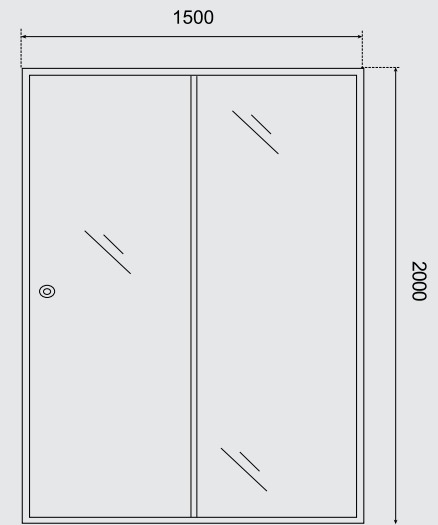
AQUAPOLIS
WELLNESSWARE
SHOWER PARTITION
SP 101



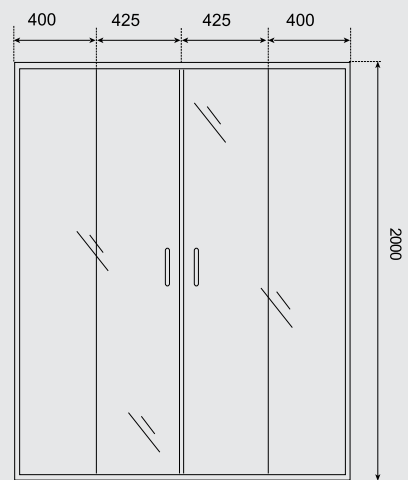
AQUAPOLIS
WELLNESSWARE
SHOWER PARTITION
SP 102



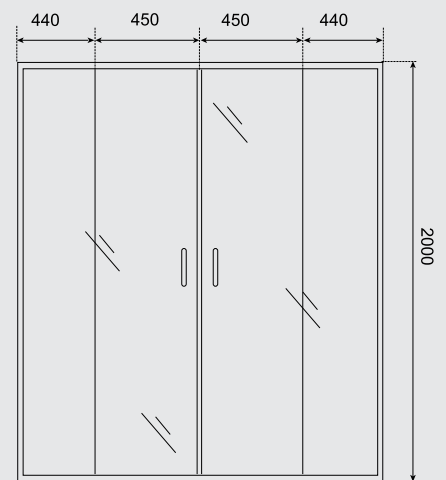
AQUAPOLIS
WELLNESSWARE
SHOWER PARTITION
SP 103



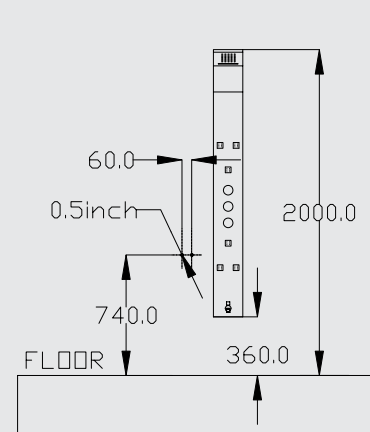
AQUAPOLIS
WELLNESSWARE
SHOWER PARTITION
SP 104



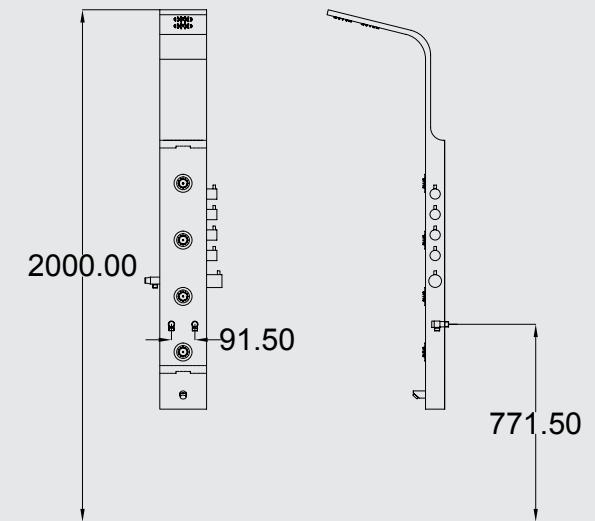
AQUAPOLIS
WELLNESSWARE
SHOWER PARTITION
SP 105



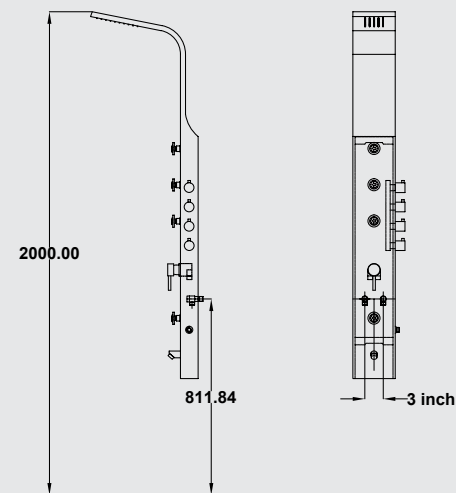
AQUAPOLIS
WELLNESSWARE
THERMOSTATIC
SHOWER PANEL
SL 2003



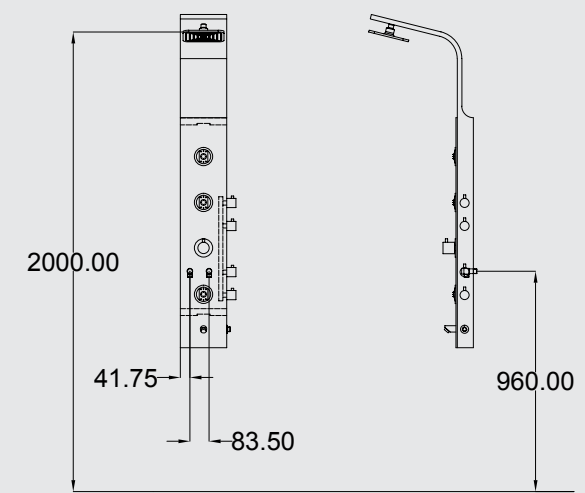
AQUAPOLIS
WELLNESSWARE
THERMOSTATIC
SHOWER PANEL
SL 2008



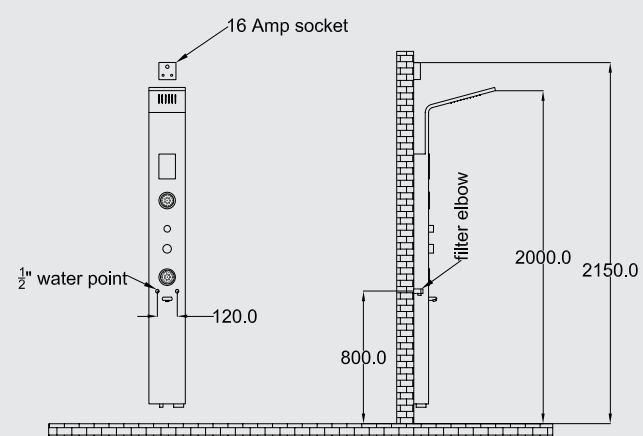
AQUAPOLIS
WELLNESSWARE
THERMOSTATIC
SHOWER PANEL
SL 2009



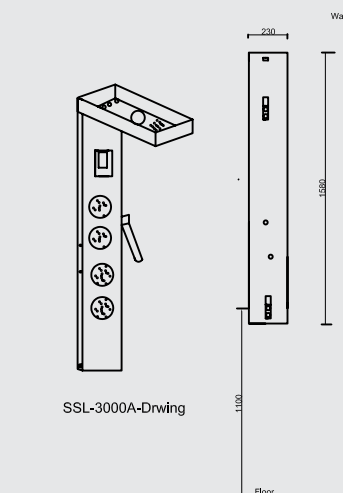
AQUAPOLIS
WELLNESSWARE
THERMOSTATIC
SHOWER PANEL
SL 2010



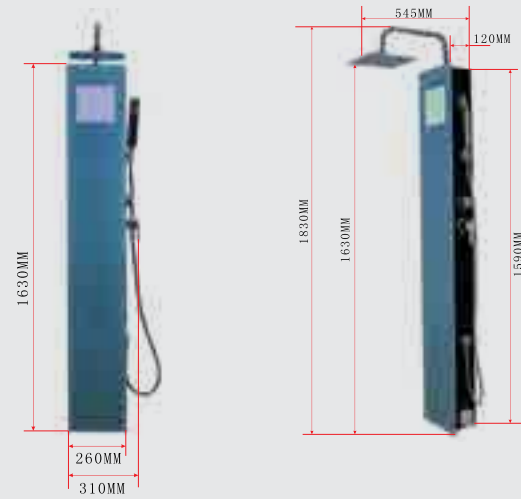
AQUAPOLIS
WELLNESSWARE
SAUNA SHOWER PANEL
SSL 3000



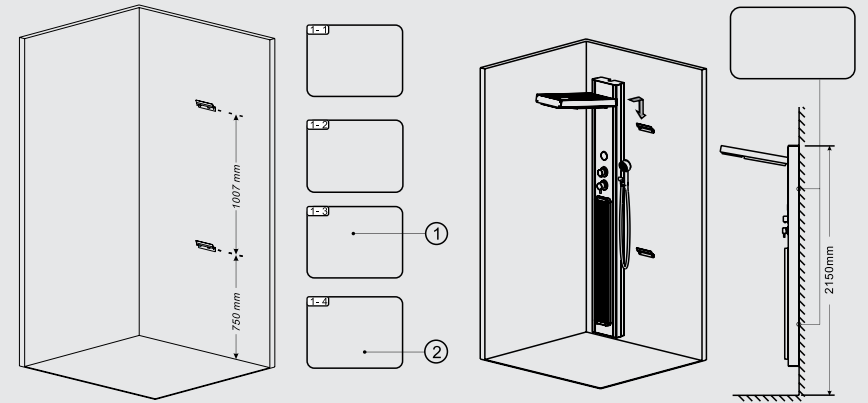
AQUAPOLIS
WELLNESSWARE
SAUNA SHOWER PANEL
SSL 3000 A



AQUAPOLIS
WELLNESSWARE
SAUNA SHOWER PANEL
SSL 4000
SSL 5000



AQUAPOLIS
WELLNESSWARE
INFRARED SAUNA
SHOWER PANEL
FIR SL 1000

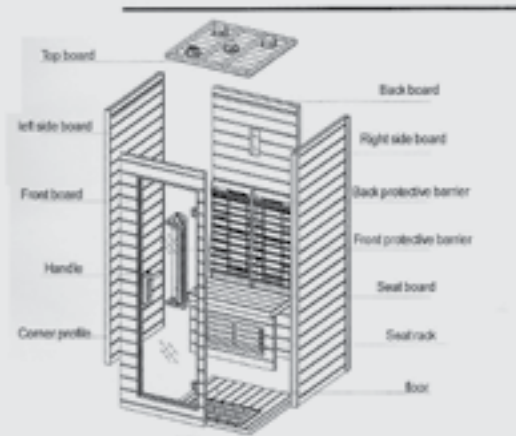


No.	Parts name	No.	Parts name
1	plastic grain	2	ST5*45 screw

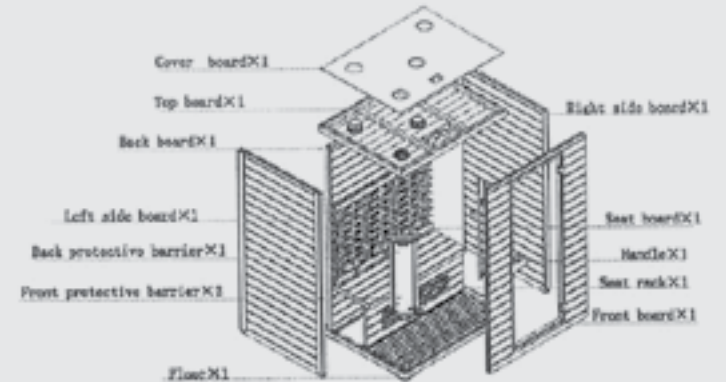
AQUAPOLIS
WELLNESSWARE
INFRARED DRY SAUNA
FIR SR 1000



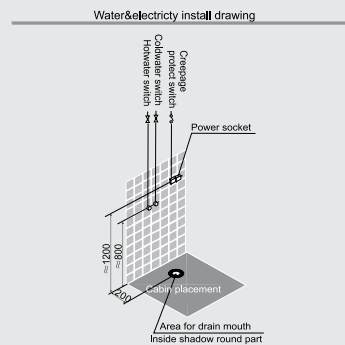
08-K5 Installation drawing



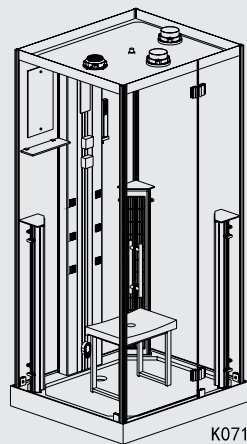
AQUAPOLIS
WELLNESSWARE
INFRARED DRY SAUNA
FIR SR 2000



AQUAPOLIS
WELLNESSWARE
SHOWER CUBICLE
WITH DUAL SAUNA
FIR SC 3000



Hot water: G1/2 steel wire tube, height 800mm; Inside shadow round part
Cold water: G1/2 steel wire tube, height 800mm;
Power: 220-240V 50HZ/60HZ single phase three line system; above 16A
load capability; 1200mm high from earth;
Sinkhole: The diameter of the sinkhole underground should be $\Phi 60$.
Attention:
1. When turn on the steam, please be sure that there's enough cold water,
otherwise, the steam generator will be damaged;
2. Power and water resource should be controlled by divide switch, switch must
be placed in the convenient place;
3. After enjoying your shower, the power and water resource must be turn off.





For after sales service:
Kriztle Care: 9961198222

Email: service@kriztle.com

Tool Free (India):
1800-425-4356

WE DESIGN

Our free consultation service will help you turn your ideas into your dream bathroom. The beginning of a new bathroom project can be daunting. Do not worry. We offer bespoke, face to face service, which means that we can help you every step of the way, from inspiration to installation and more. Our dedicated consultants will be happy to discuss your needs and the solutions for the bathroom to fit your budget.

WE INSTALL

Kriztle will take care of the installations of all products you purchase from us for your dream bathroom. Our team of expert Technicians knows each Kriztle product like the parts of their body. We aim to make your project as hassle free as possible, minimizing all the complications within a short span

of time. Your local Kriztle dealer is always on your service if you have any queries, whilst our Support Centre monitors quality across each individual project.

WE CARE

We ensure you to have a complete peace of mind before, during, and long after you've selected Kriztle products. Our products are fully guaranteed to ensure best quality and optimum results. Each member in Kriztle Team is trained to offer you the best service possible and we follow up on every project to make sure our customers are completely satisfied. In a rarest of rare chance, something isn't quite right we will resolve the matter as soon as possible after getting the information.

PRODUCT WARRANTY

KRIZTLE CARE

Kriztle products which is designed and manufactured to conform the most rigid standards of quality, reliability and safety.

2 YEAR PRODUCT WARRANTY

Your Kriztle product is fully warranted against any type of manufacturing defects for a period of 2year*. In the event of the failure of the unit due to manufacturing defects, we undertake to repair or replace the unit free of charge at our discretion. The warranty does not cover damage to any part of the Kriztle product due to accident, misuse, willful damage, normal wear and tear, claim arising from theft, fire or natural calamities of any type.

3YEAR EXTENDED SERVICE WARRANTY

After the completion of warranty period, you will be entitled to an extended 3 year service warranty where the labour charge will be free of cost. However, consumables and spare parts shall be chargeable.

The warranty period is not renewed or extended on supply of spare parts during the warranty. The company will at sole discretion, repair or replace any defective component or part of product with or without cost.

The company or its service franchisee alone is authorized to service/repair the product.

Glass, Hoses rubber parts plastic parts and consumables are not included in warranty. In case of defects on such products arising prior to installation, the

company will decide on repair/replacement after inspection at company's discretion

The warranty is only effective if proof of purchase is provided.

The warranty will cover only manufacturing defects of the product and will not cover any defects arising out of the control of the company like insufficient water pressure, high water impurities/hardness, breakage of parts due to excessive force etc

Both the above warranties do not cover damage resulting from

- Usage not in accordance with the instructional manual
- Any alternation or modification to the unit
- Repair/Installation by unauthorized persons
- Damages or loss of efficiency due to poor quality of inlet water or poor handling

For proper usage of Kriztle product and to derive best results, refer to instruction manual.

Warranty will be void, if purchase is not registered within 30days

This warranty is not assignable or transferable

All disputes are subject to courts of Cochin jurisdiction

*For commercial use warranty is limited to one year only

 Vanity wash counters |  Mirrors (Designer LED) |  Bath accessories, Faucets & more |  Showers |  Indoor and outdoor spas |  Steam and infrared saunas |  Shower partitions

KRIZTLE BATH & WELLNESS PVT.LTD.

P. T. Usha Rd, **Cochin** 682 011. T: 0484 4042345, 4061700

Bel Layout, Anjaja Nagar, Nr. East West College Road, **Bangalore** 560 091. T: 080 25552033.

G-4, No.116, P.H Road, Opp Hotel Abu Sarovar Portico, **Chennai** 600 084. T: 9380012312.

Jawahar Auto Nagar, Vijayawada, **Andra pradesh** 520 007. T: 9544814422

Kriztle Bath & Wellness GmbH, Am Stadtrand 53b 8600 Dubendorf, **Switzerland**. T: +41 43 2775925.

Email: business@kriztle.com facebook.com/kriztlebath. www.kriztle.com

Toll Free: (India) 1800-425-4356

Experience Kriztle at **LIVE PRODUCT DISPLAY CENTRE**, PT Usha Road, Kochi. Tel: +91-484-4027432, 9961198222.

Kriztle Bath & Wellness Pvt. Ltd. reserves the right for the images and contents used. Unauthorized copying of the images is not permissible. We reserve the right to make technical improvements and enhance the appearance of the products shown. Colours of the actual products may slightly vary from the pictures in the catalogue. Customers are advised to see the actual product for a true understanding of the colour & finish of all products.

